

Distributed by:

JAMECO[®]
ELECTRONICS

www.Jameco.com ♦ 1-800-831-4242

The content and copyrights of the attached
material are the property of its owner.

Jameco Part Number 961151

4

3

2

1

THIS DRAWING IS UNPUBLISHED.

RELEASED FOR PUBLICATION

© COPYRIGHT - BY TYCO ELECTRONICS CORPORATION. ALL RIGHTS RESERVED.

LOC

DIST

REVISIONS

GP

00

P

LTR

DESCRIPTION

DATE

DWN

APVD

0

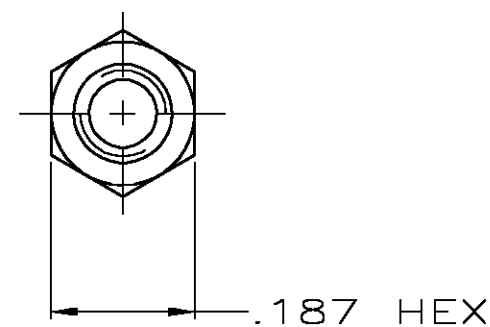
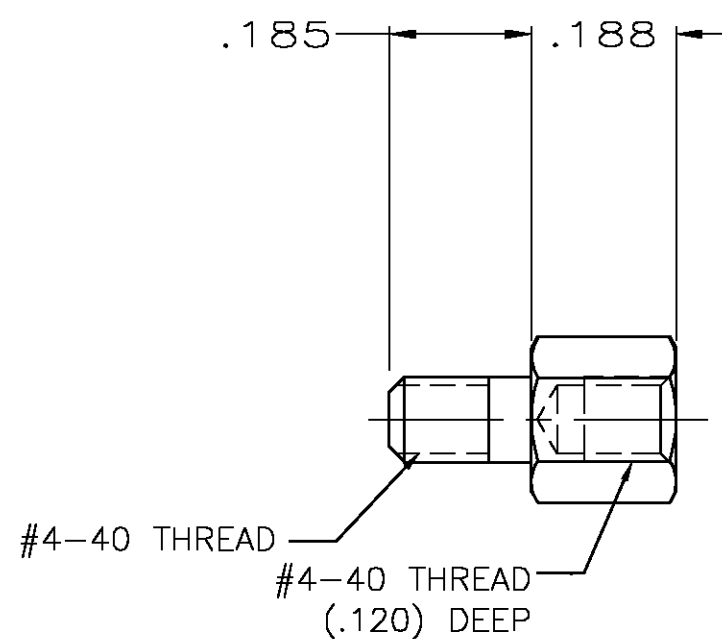
RELEASED PER EC 0S13-0207-05

17JUN05

RR

JG

1 ZINC PLATED .000200-.000400 THICK CLEAR CHROMATE COATING.



5747877-3

PART NUMBER

THIS DRAWING IS A CONTROLLED DOCUMENT.

DWN R.RICHARDSON 17JUN05

CHK C.ROHDE 17JUN05

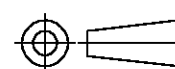
APVD M.WALMSLEY 17JUN05

PRODUCT SPEC

APPLICATION SPEC

WEIGHT

CUSTOMER DRAWING

DIMENSIONS:
INCHESTOLERANCES UNLESS
OTHERWISE SPECIFIED:

0 PLC ± -
1 PLC ± -
2 PLC ± -
3 PLC ± .005
4 PLC ± -
ANGLES ± -

MATERIAL
STEEL PER
ASTM A108

FINISH

**tyco**
Electronics

Tyco Electronics Corporation
Harrisburg, Pa 17105-3608

NAME
SCREWLOCK, FEMALE, SPECIAL, AMPLIMITE

SIZE CAGE CODE DRAWING NO RESTRICTED TO

A3 00779 C-5747877

SCALE
4:1

SHEET
1 OF 1

REV
0