

Distributed by:

JAMECO[®]
ELECTRONICS

www.Jameco.com ♦ 1-800-831-4242

The content and copyrights of the attached
material are the property of its owner.

Jameco Part Number 846671

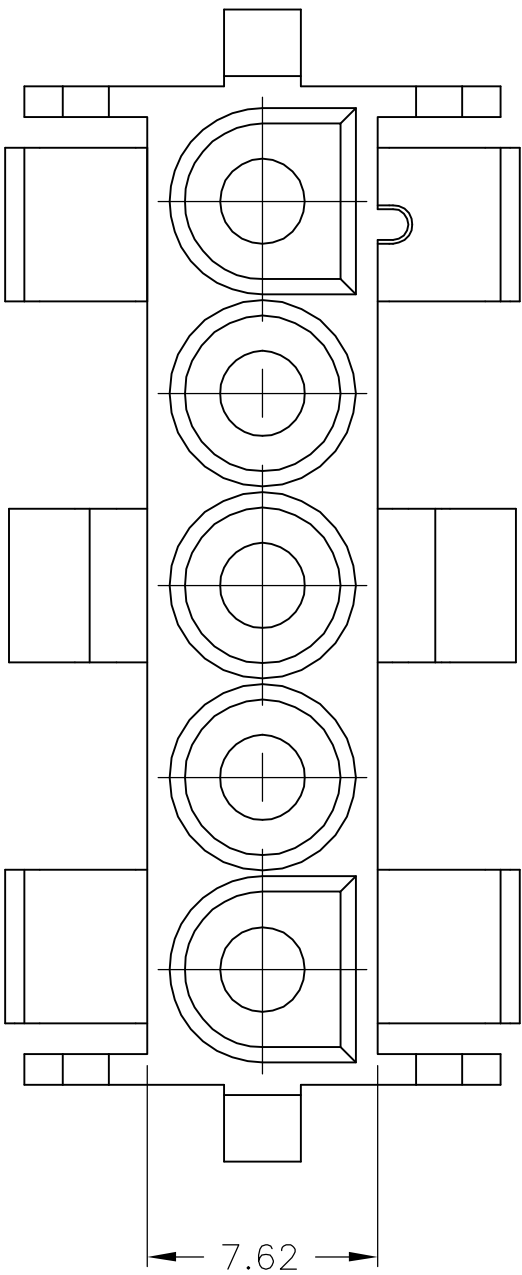
LOC		DIST		REVISIONS					
CM		53		P	LTR	DESCRIPTION	DATE	DWN	APVD
					W1	ECO-06-018902	23AUG06	BSV	GSR

D

C

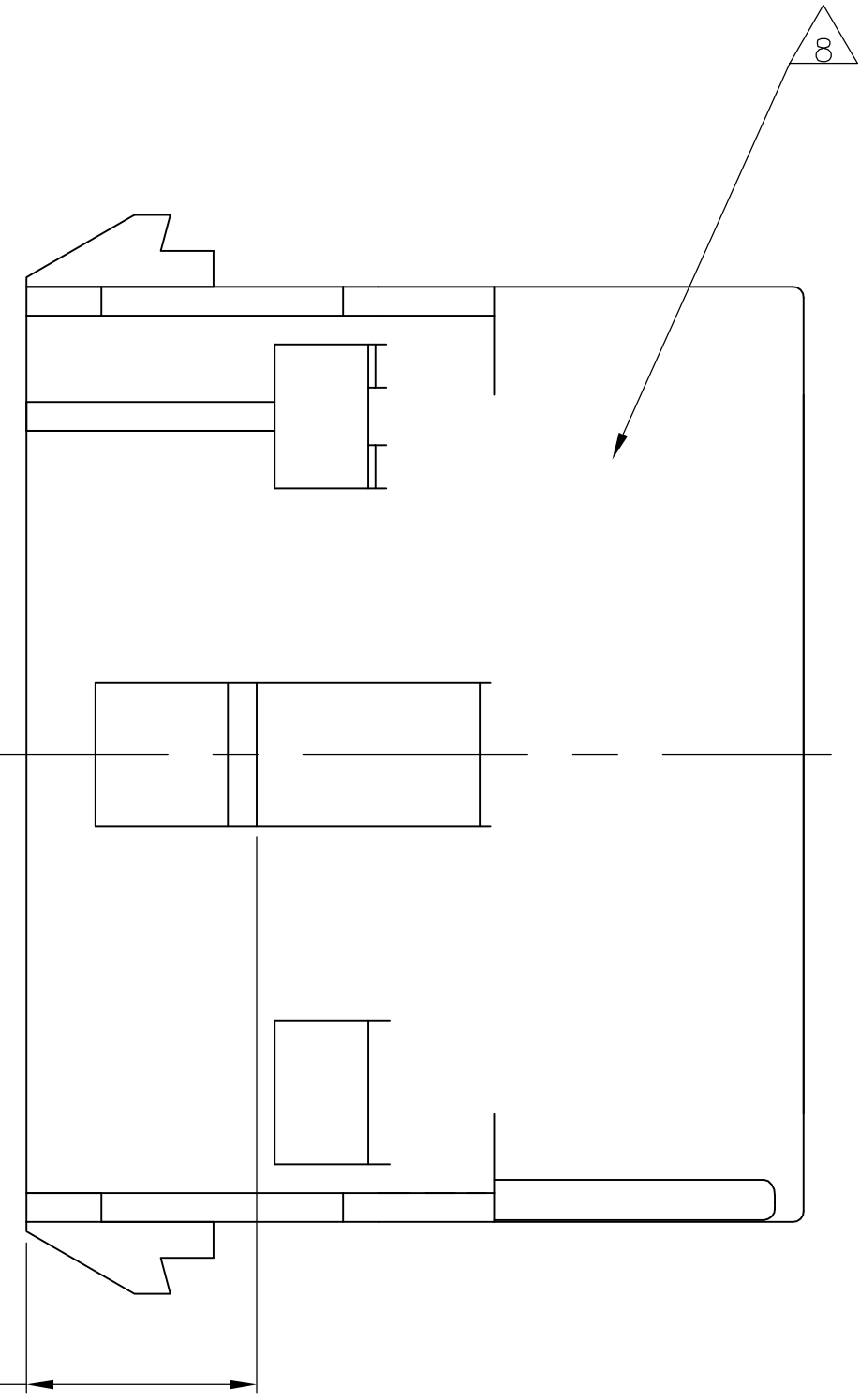
B

A

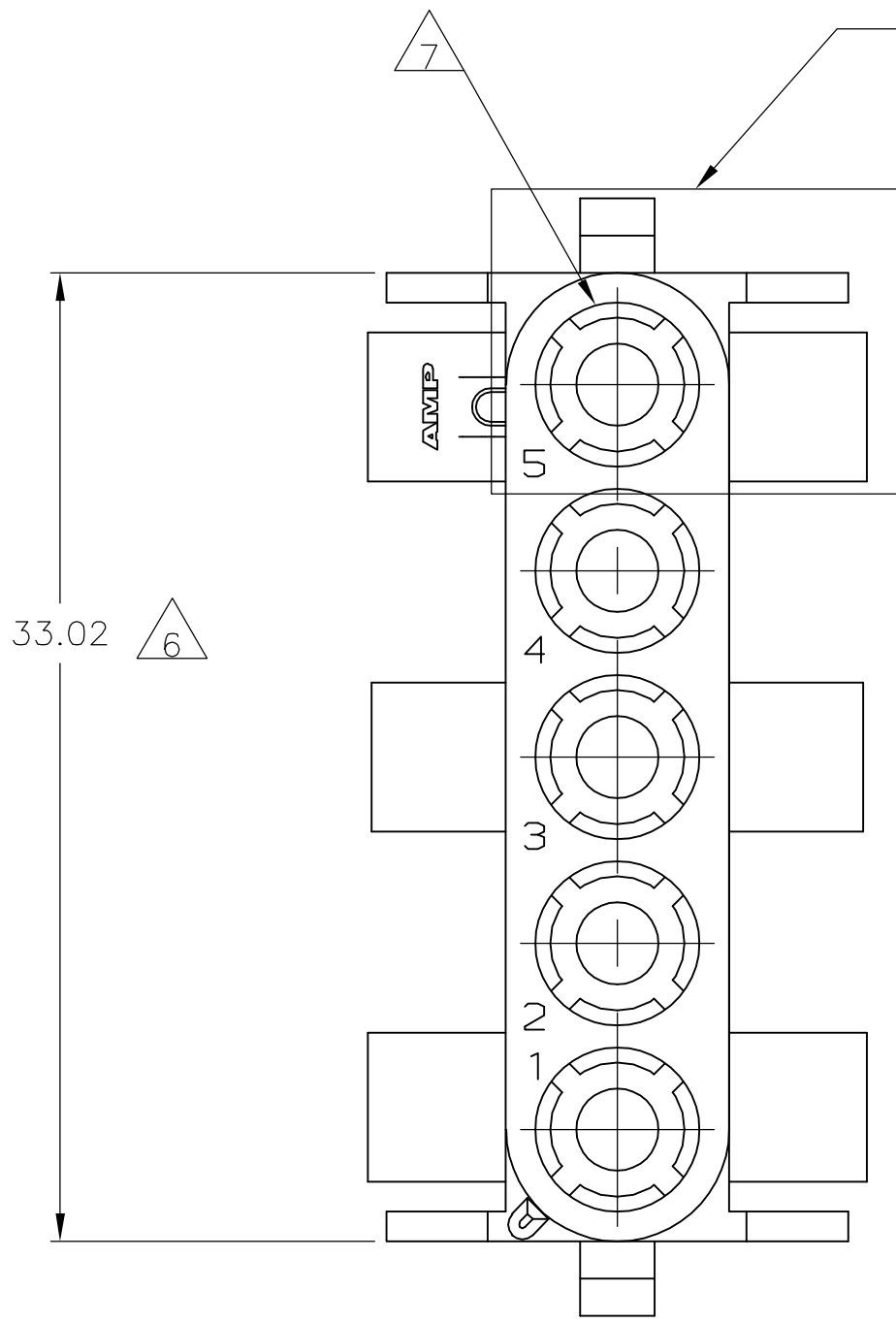


△6

8.13±0.25



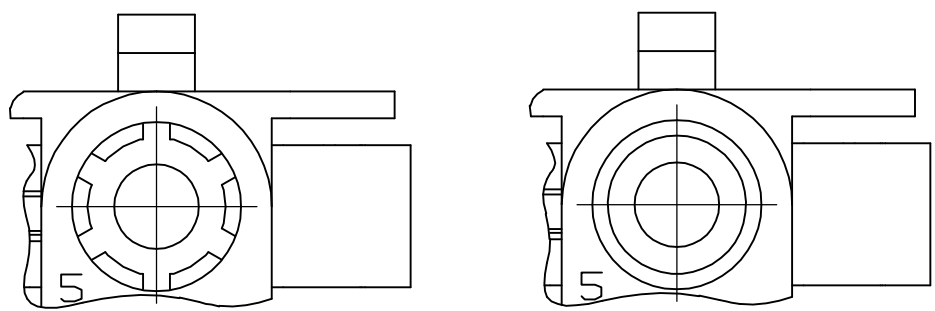
△8



33.02 △6

1. MATES WITH APPROPRIATE UNIVERSAL MATE-N-LOK™ PLUG.
2. RECOMMENDED PANEL THICKNESS 0.76 – 2.29.
3. PANEL MUST BE PUNCHED SO THAT THE HOUSING ENTERS THE PANEL IN THE SAME DIRECTION AS THE PUNCH.

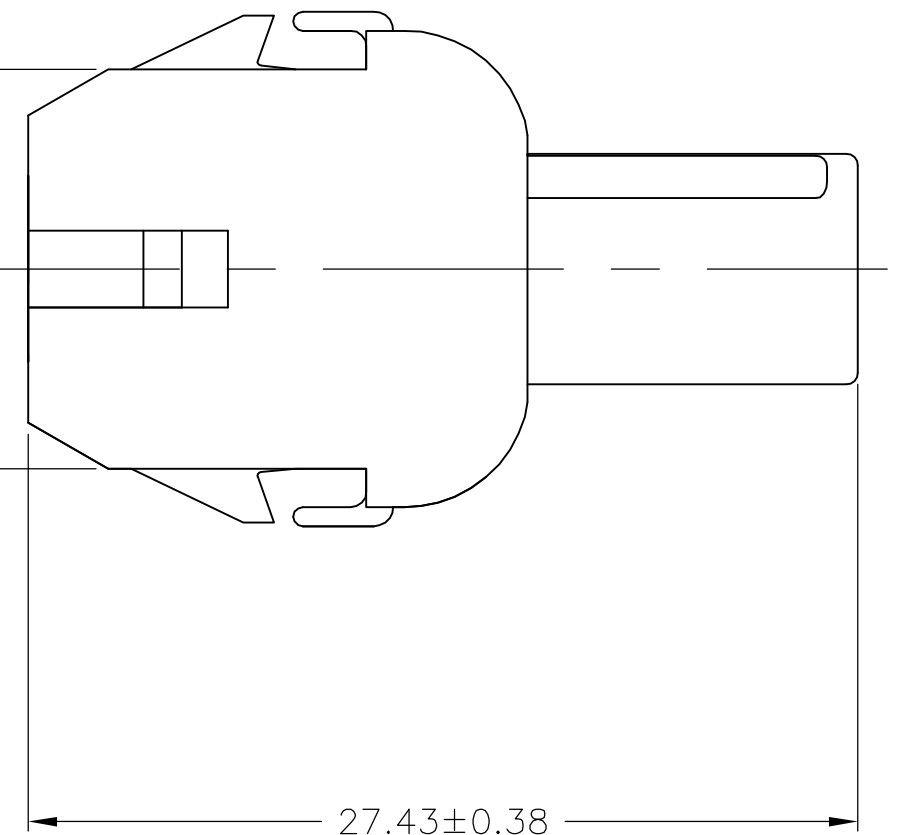
- △4 OPTIONAL FOR KEYING HOUSING IN PANEL.
- △5 CIRCUIT NUMBER 1 LOCATION.
- △6 DIMENSION INDICATED IS AS MOLDED. ADDITIONAL GROWTH DUE TO SUBSEQUENT MOISTURE ABSORPTION MAY OCCUR.
- △7 FOUR RIBS EQUALLY SPACED, NO SPECIFIC ORIENTATION. NO RIBS OR SIX RIBS EQUALLY SPACED, NO SPECIFIC ORIENTATION, OPTIONAL.
- △8 UNDERWRITERS RECOGNIZED COMPONENT LOGO AND CSA CERTIFICATION LOGO TO BE LOCATED ONCE EACH ON SIDE OF HOUSING.



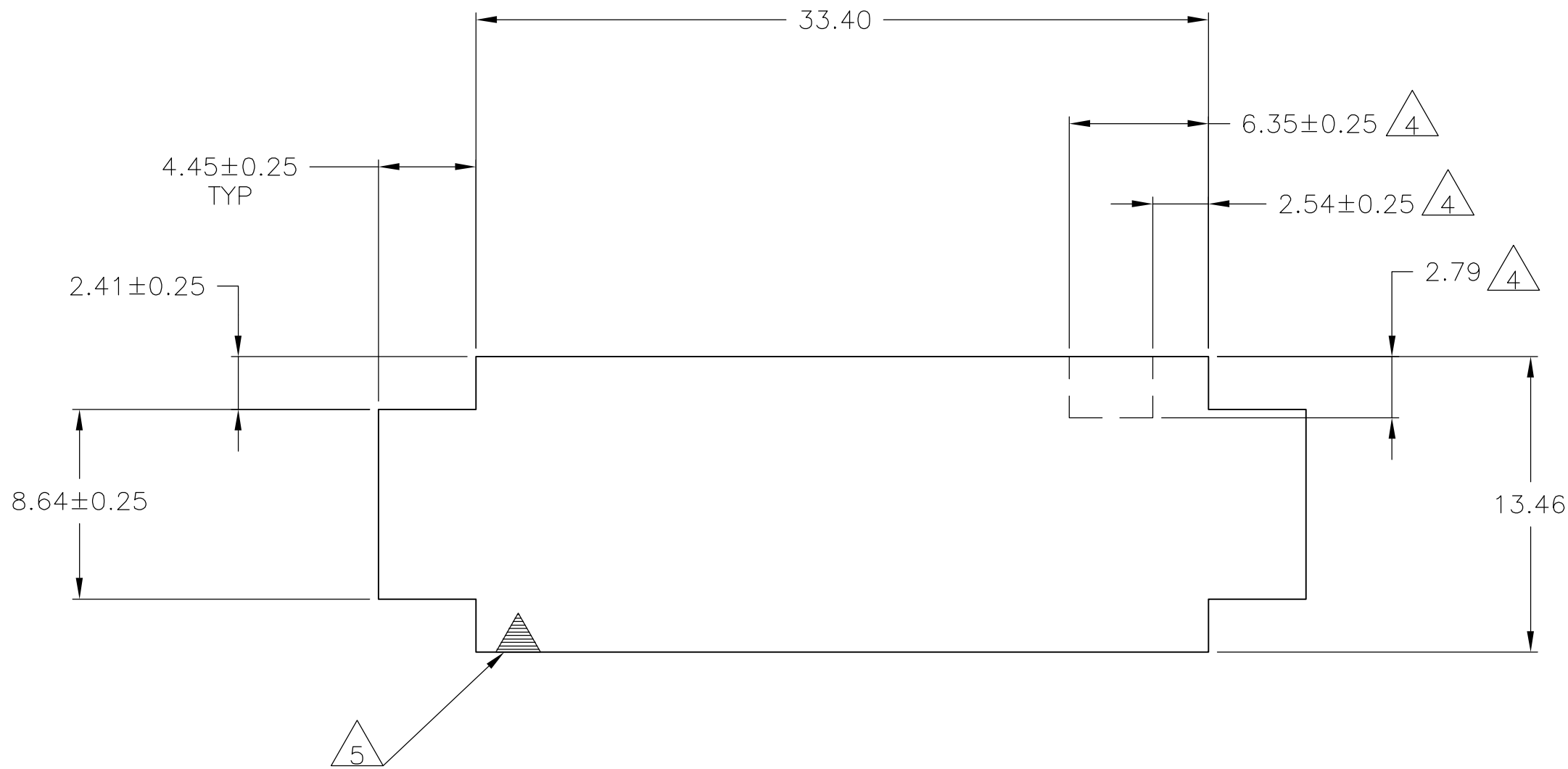
DETAIL E
OPTIONAL CONSTRUCTIONS

△6

13.21^{+0.13}_{-0.25}

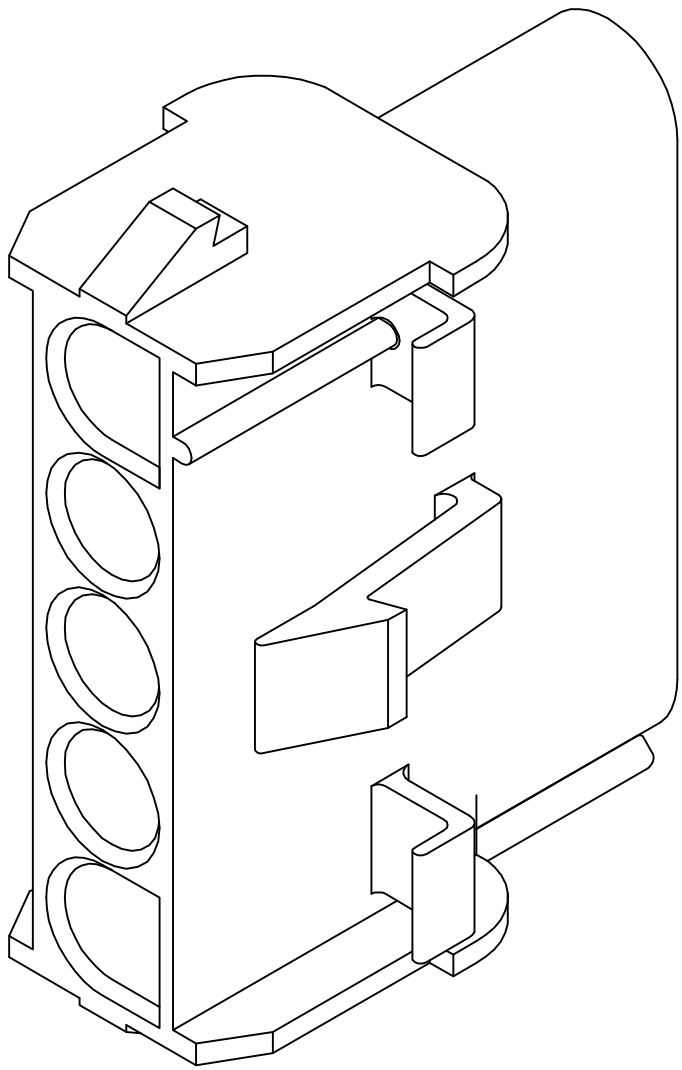


27.43±0.38



RECOMMENDED PANEL CUT OUT

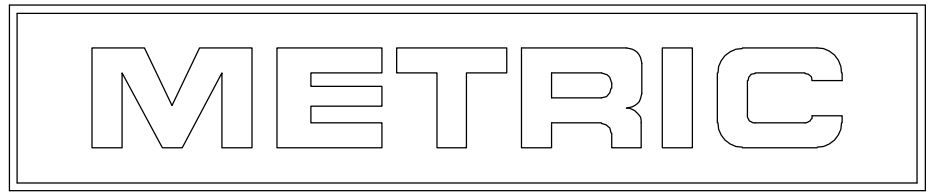
△5



3-DIMENSIONAL MODEL
NTS

4.45	.175	33.40	1.315
2.79	.110	33.02	1.300
2.54	.100	27.43	1.080
2.41	.095	13.46	.530
2.29	.090	13.21	.520
0.76	.030	8.64	.340
0.38	.015	8.13	.320
0.25	.010	7.62	.300
0.13	.005	6.35	.250
MM	IN	MM	IN

CONVERSION TABLE



THIS DRAWING IS A CONTROLLED DOCUMENT.		DWN K. WHITAKER 07JUL92	tyco Electronics		Tyco Electronics Corporation Harrisburg, PA 17105-3608	
DIMENSIONS: mm		CHK R. SWING 07JUL92				
		APVD D. SELF 08JUL92	NAME		CAP.5 CIRCUIT, UNIVERSAL MATE-N-LOK™ —	
		TOLERANCES UNLESS OTHERWISE SPECIFIED: 0 PLC ± — 1 PLC ± — 2 PLC ± 0.13 3 PLC ± — 4 PLC ± — ANGLES ± 1°	PRODUCT SPEC		APPLICATION SPEC	
MATERIAL NYLON,UL 94V-0		FINISH —	WEIGHT —		SIZE A1	CAGE CODE 00779
				DRAWING NO C=350810	RESTRICTED TO —	
				CUSTOMER DRAWING		SCALE 4:1
						SHEET 1 OF 1
						REV W1

D

C

B

A