

Distributed by:

JAMECO[®]
ELECTRONICS

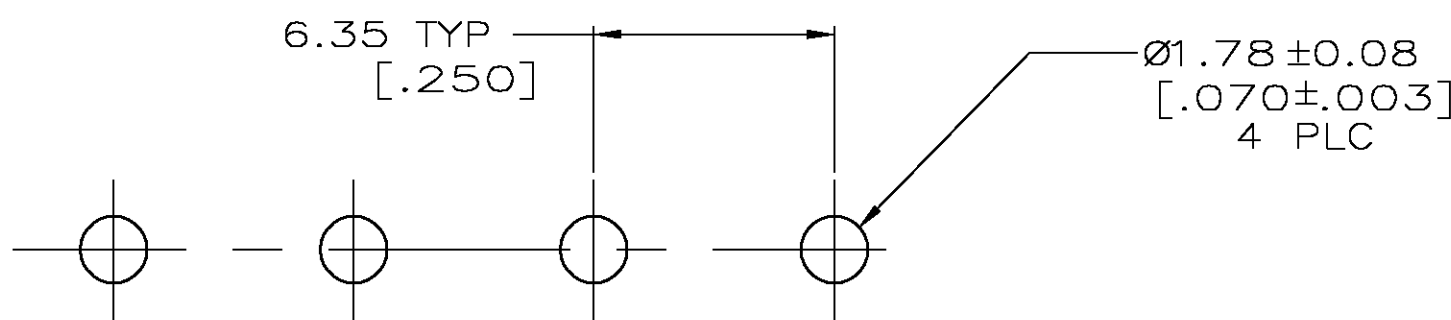
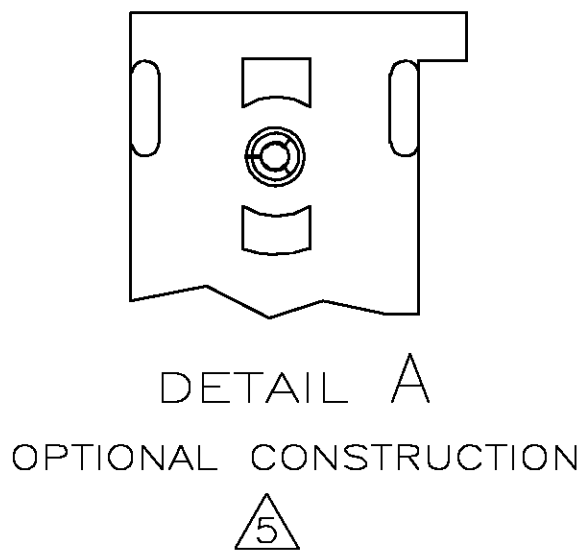
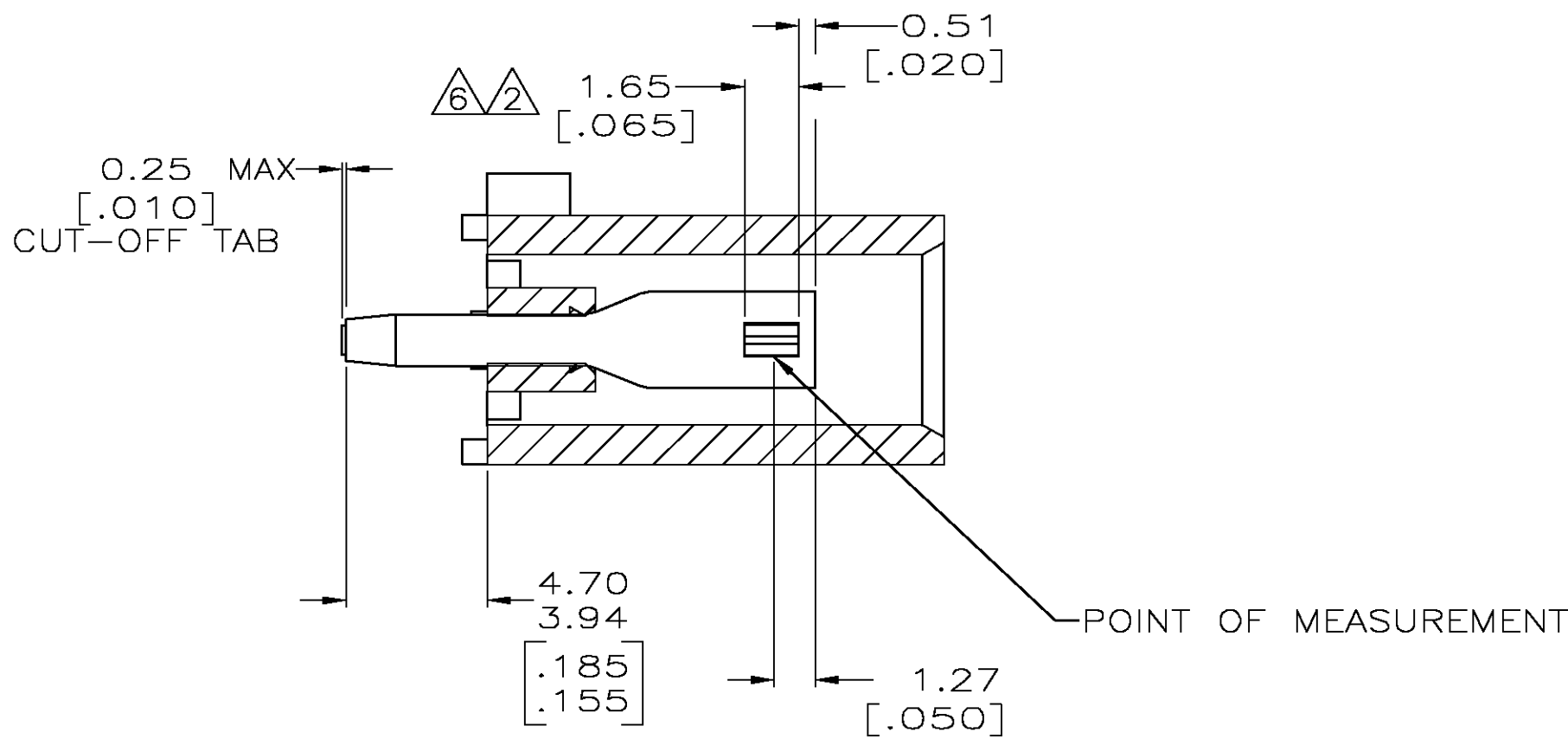
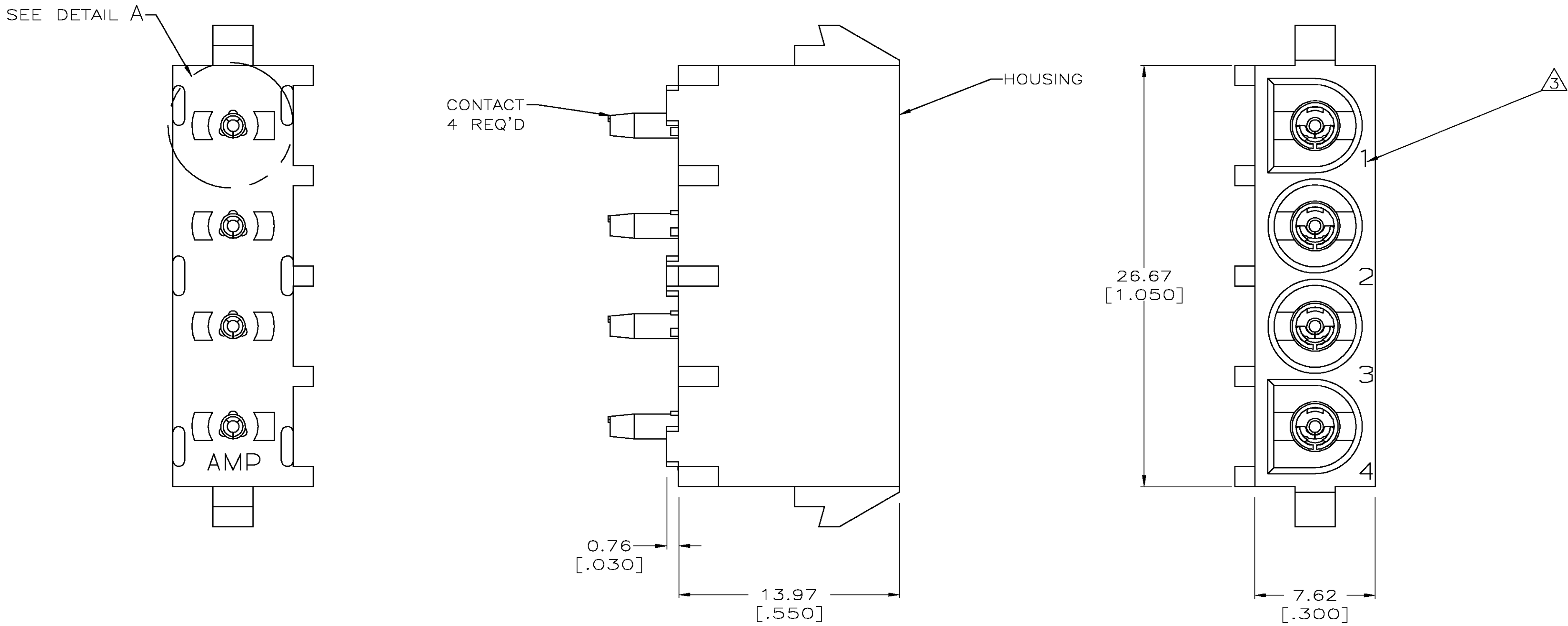
www.Jameco.com ♦ 1-800-831-4242

The content and copyrights of the attached
material are the property of its owner.

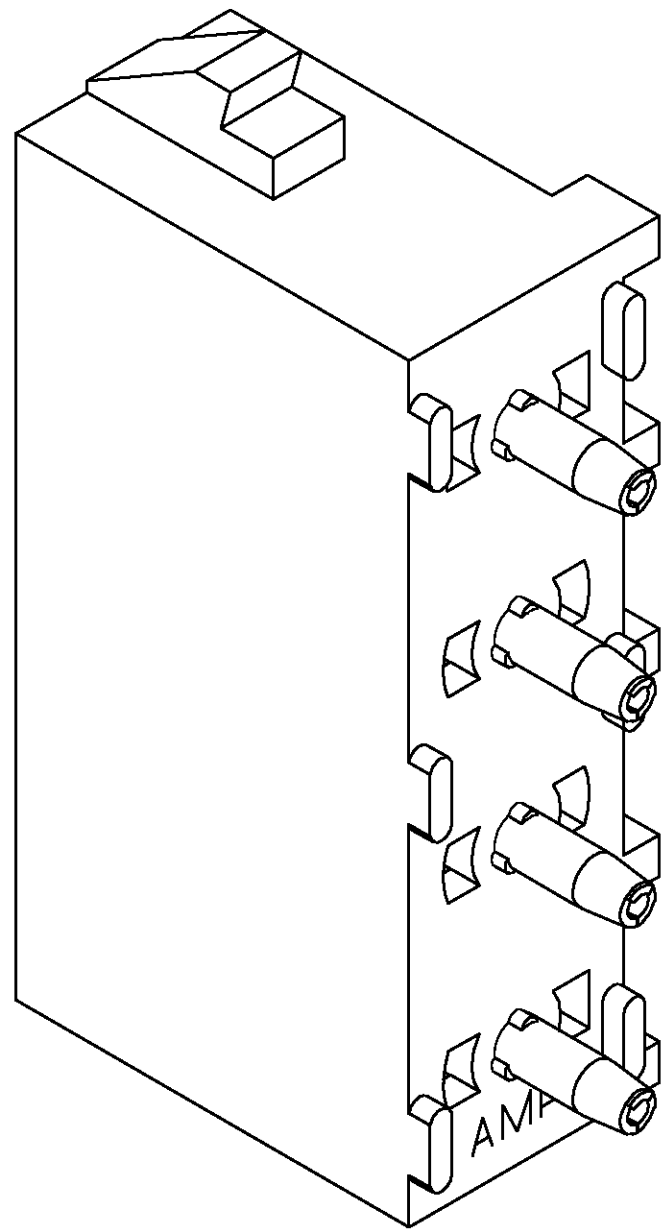
Jameco Part Number 846321

LOC	DIST	REVISIONS					
		P	LTR	DESCRIPTION	DATE	OWN	APVD
CM	00	N		REVISED PER EC 0G3B-1094-04	26JAN05	KW	SR

1. PARTS COMPLY TO AMP SOLDERABILITY SPECIFICATION 109-11-3.
2. CONTACT IS PLATED OVERALL WITH 0.00127 [.000050] NICKEL, THEN 0.00076 [.000030] GOLD OVER CONTACT LENGTH INDICATED AND MATTE TIN LEAD ON SOLDER TAIL END.
3. CIRCUIT IDENTIFICATION CHARACTERS ARE ADJACENT TO THE INDICATED CAVITIES, BUT LOCATION AND ORIENTATION MAY DIFFER FROM PRINT.
4. DIMENSIONS IN BRACKETS ARE IN INCHES.
5. DRAIN HOLES LOCATED AS SHOWN. OPTIONAL CONSTRUCTION - ALL DRAIN HOLES LOCATED 90° AS SHOWN IN DETAIL A.
6. CONTACT IS PLATED OVERALL WITH 0.00127 [.000050] NICKEL, THEN 0.00076 [.000030] GOLD OVER CONTACT LENGTH INDICATED AND MATTE TIN ON SOLDER TAIL END.

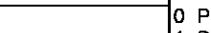


RECOMMENDED MOUNTING HOLE PATTERN
FOR 1.57 [.062] THICK P.C. BOARD



3-DIMENSIONAL MODEL
NTS

PHOSPHOR BRONZE, GOLD	NYLON,UL94V-2,NATURAL	350761-5
PHOSPHOR BRONZE, PRE-TIN	NYLON,UL94V-2,NATURAL	350761-4
PHOSPHOR BRONZE, GOLD	NYLON,UL94V-2,NATURAL	350761-3
CONTACT MATERIAL AND FINISH	HOUSING MATERIAL	PART NUMBER

THIS DRAWING IS A CONTROLLED DOCUMENT.		DN B. LEWIS	10-02-98	tyco Electronics	Tyco Electronics Corporation Greensboro, NC 27409		
DIMENSIONS: mm [INCHES]		CHK R. SWING	10-02-98		NAME SOCKET HEADER ASSEMBLY, 4 CIRCUIT UNIVERSAL MATE-N-LOK™ SIZE CAGE CODE DRAWING NO RESTRICTED TO		
TOLERANCES UNLESS OTHERWISE SPECIFIED:		APVD M. TRULL	10-02-98				
		PRODUCT SPEC					
		APPLICATION SPEC					
		WEIGHT					
		DRAWING NO					
		RESTRICTED TO					
MATERIAL SEE TABLE		FINISH SEE TABLE		A1 00779 C=350761			
		CUSTOMER DRAWING		SCALE 5:1			
				SHEET 1 of 1			
				REV N			

METRIC