

Distributed by:

JAMECO[®]
ELECTRONICS

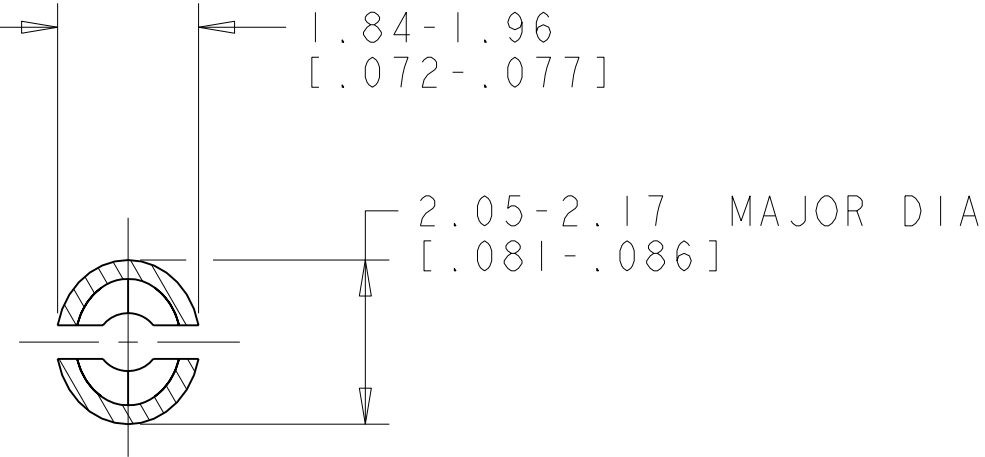
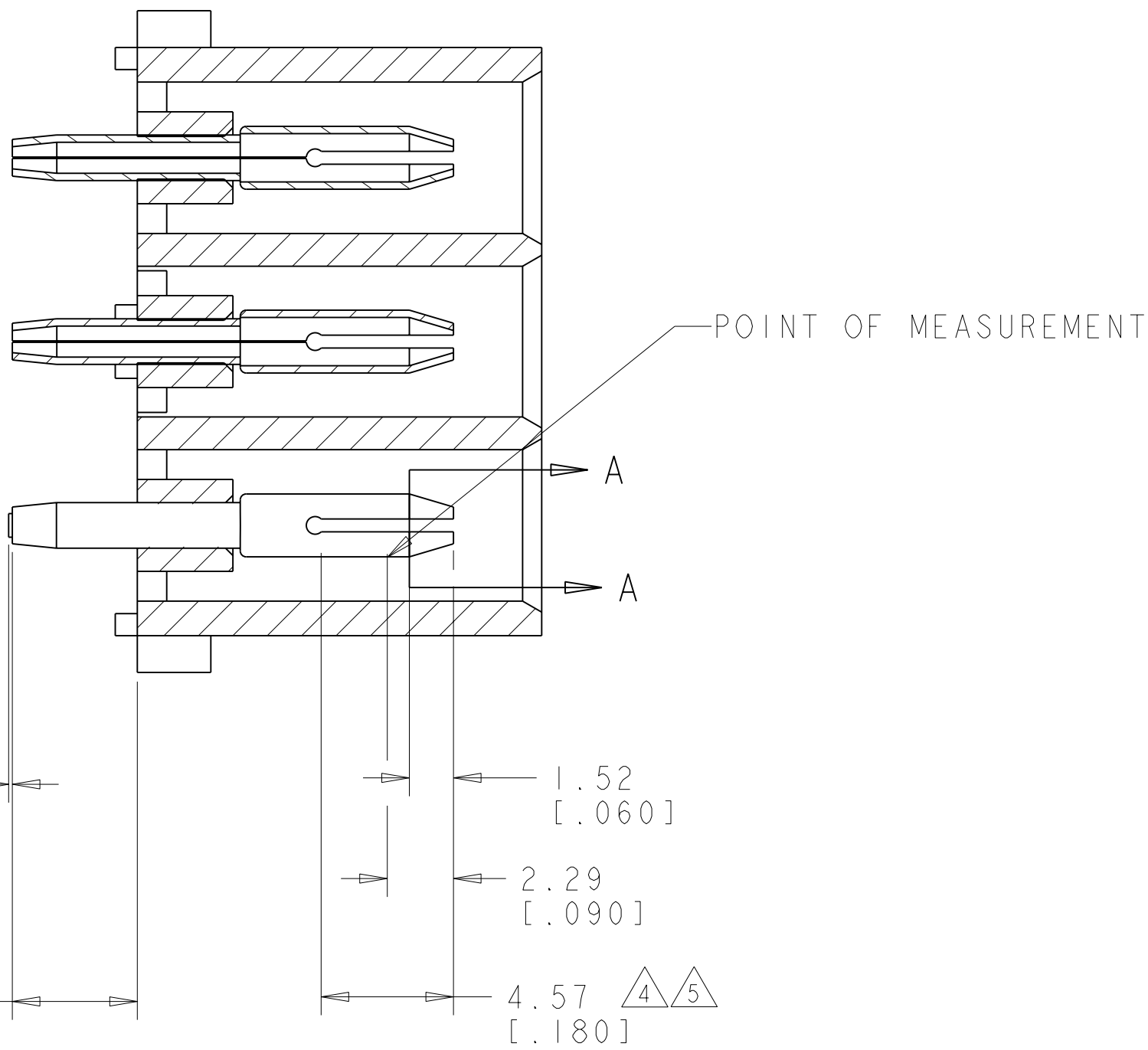
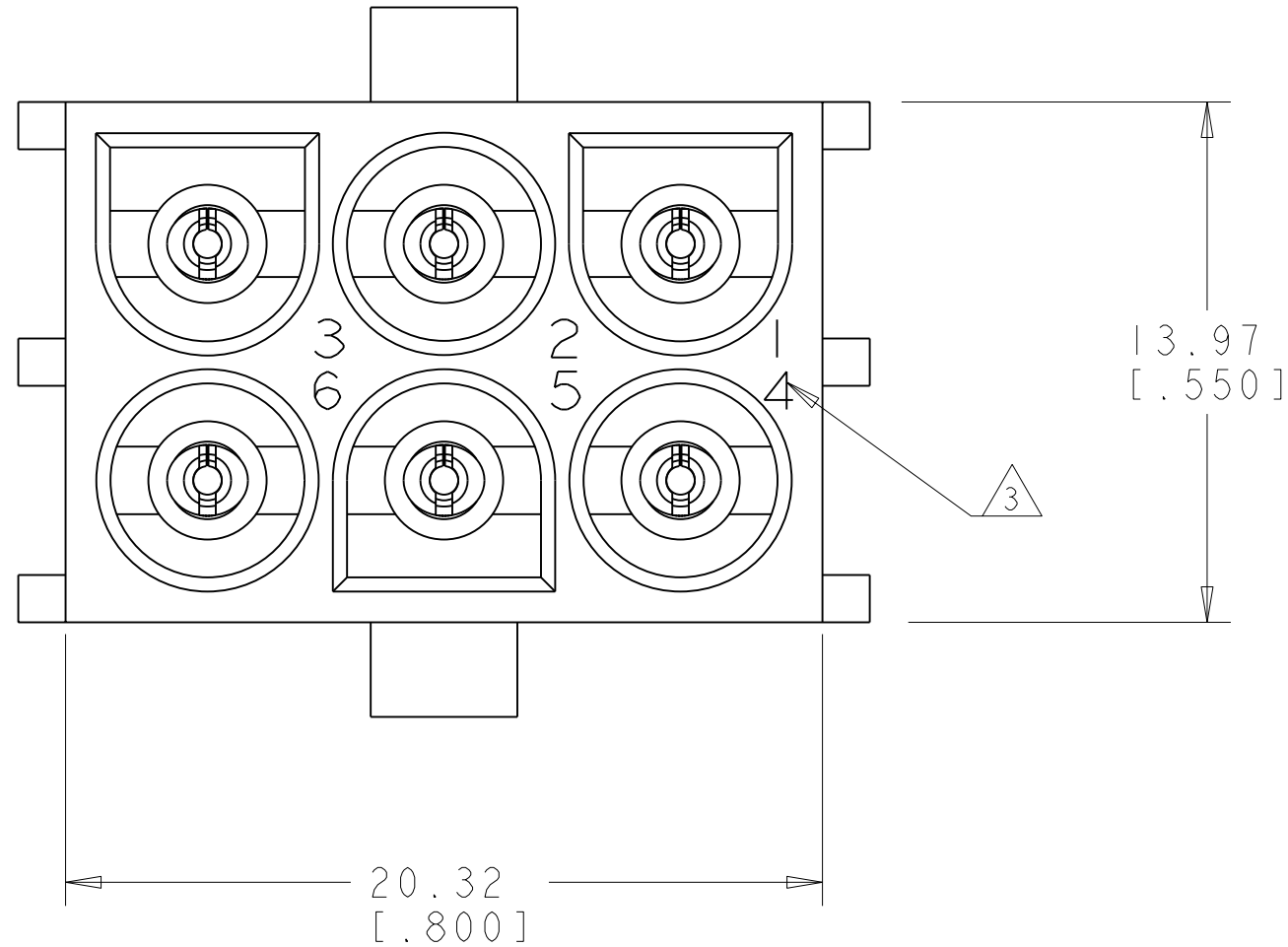
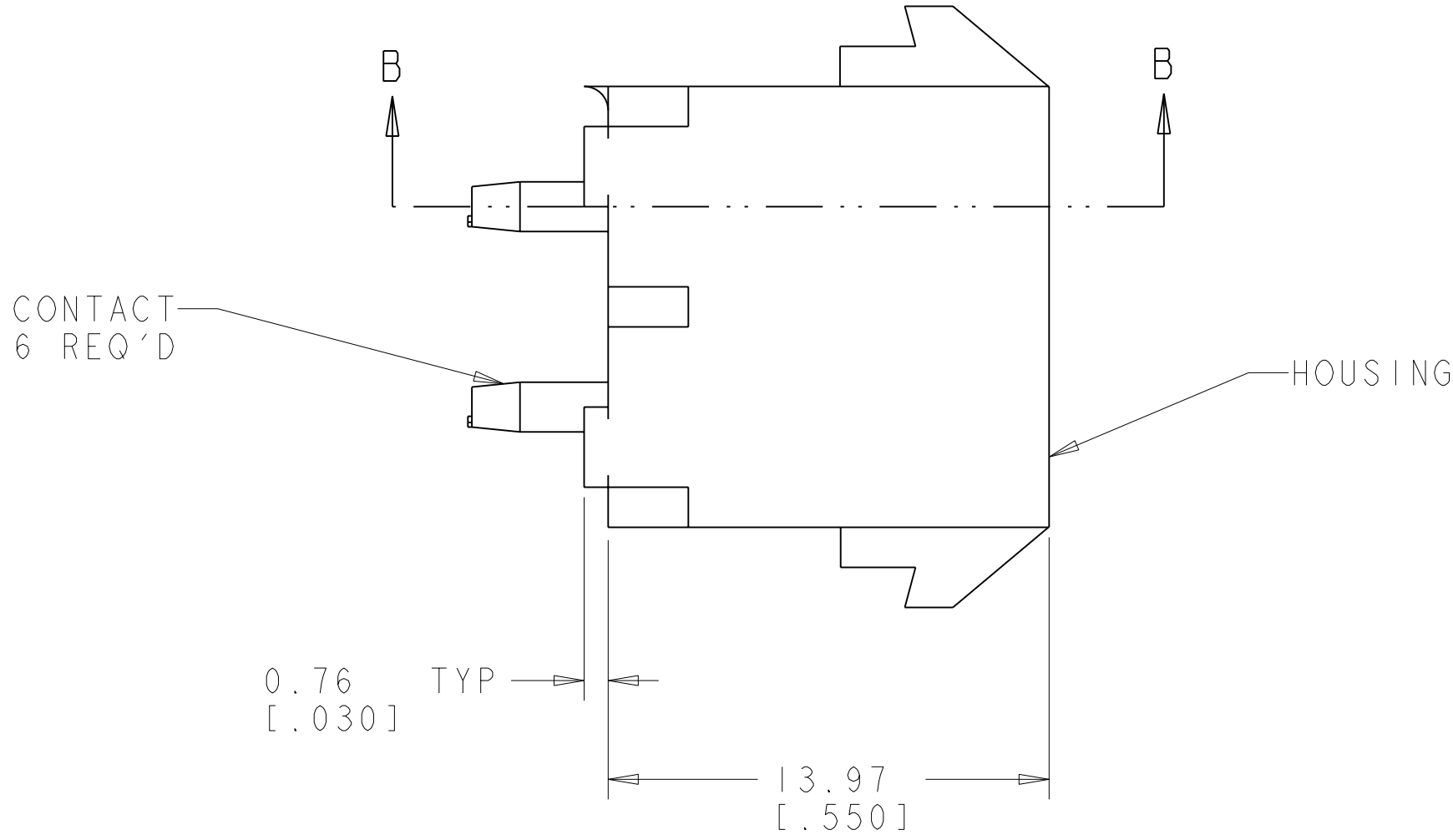
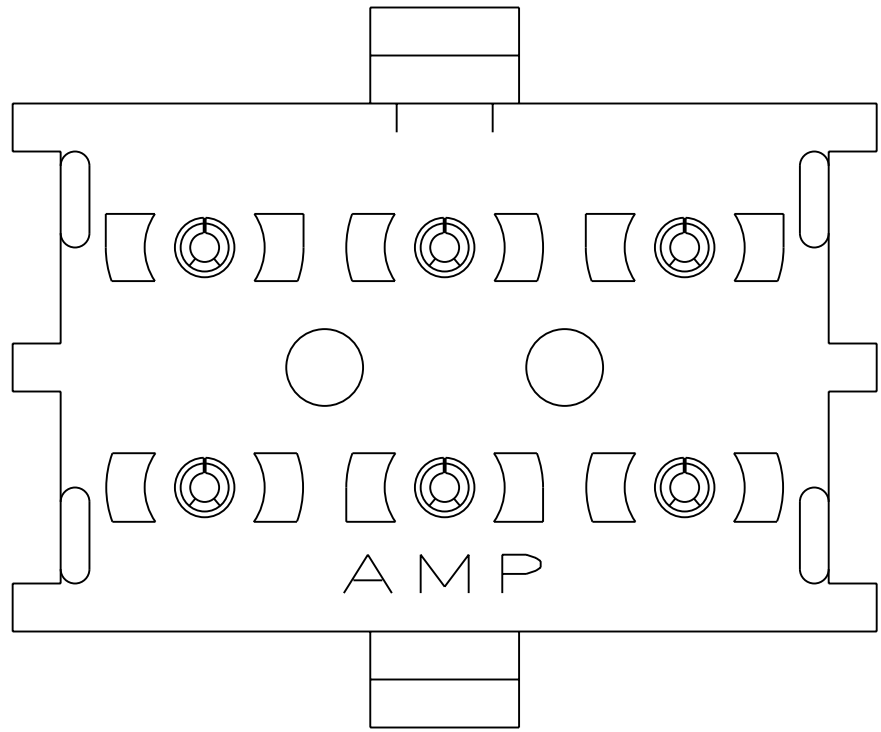
www.Jameco.com ♦ 1-800-831-4242

The content and copyrights of the attached
material are the property of its owner.

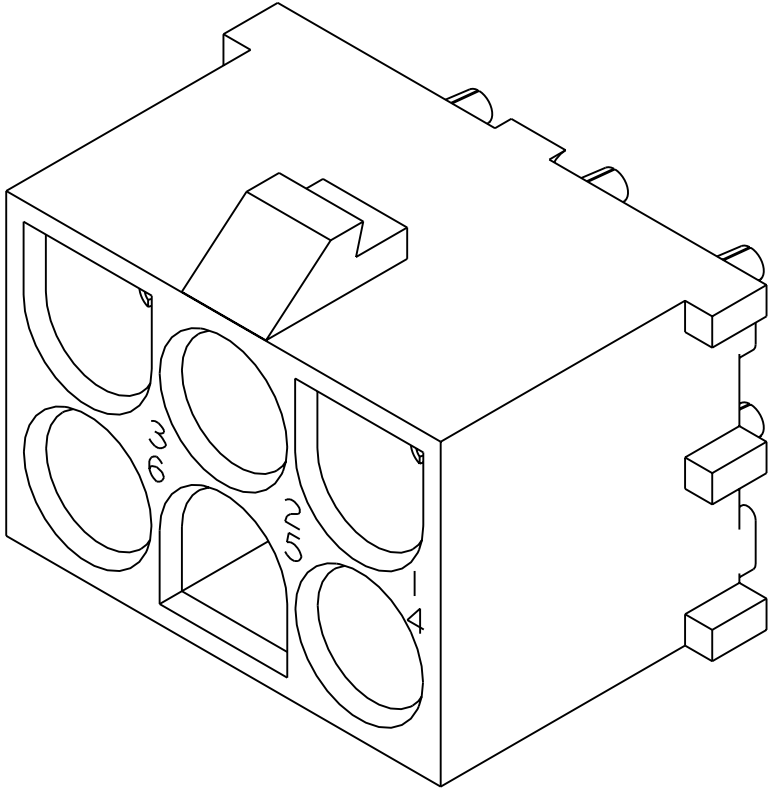
Jameco Part Number 846073

LOC		DIST		REVISIONS				
F	LTR	DESCRIPTION			DATE	DWN	APVD	
	R	REVISED PER 0G3B-1100-04			21JULY05	KW	SR	
	R1	REVISED PER ECO-05-010045			02MAR06	KW	SR	
	R2	REVISED PER ECO-06-004897			03MAR06	KW	SR	

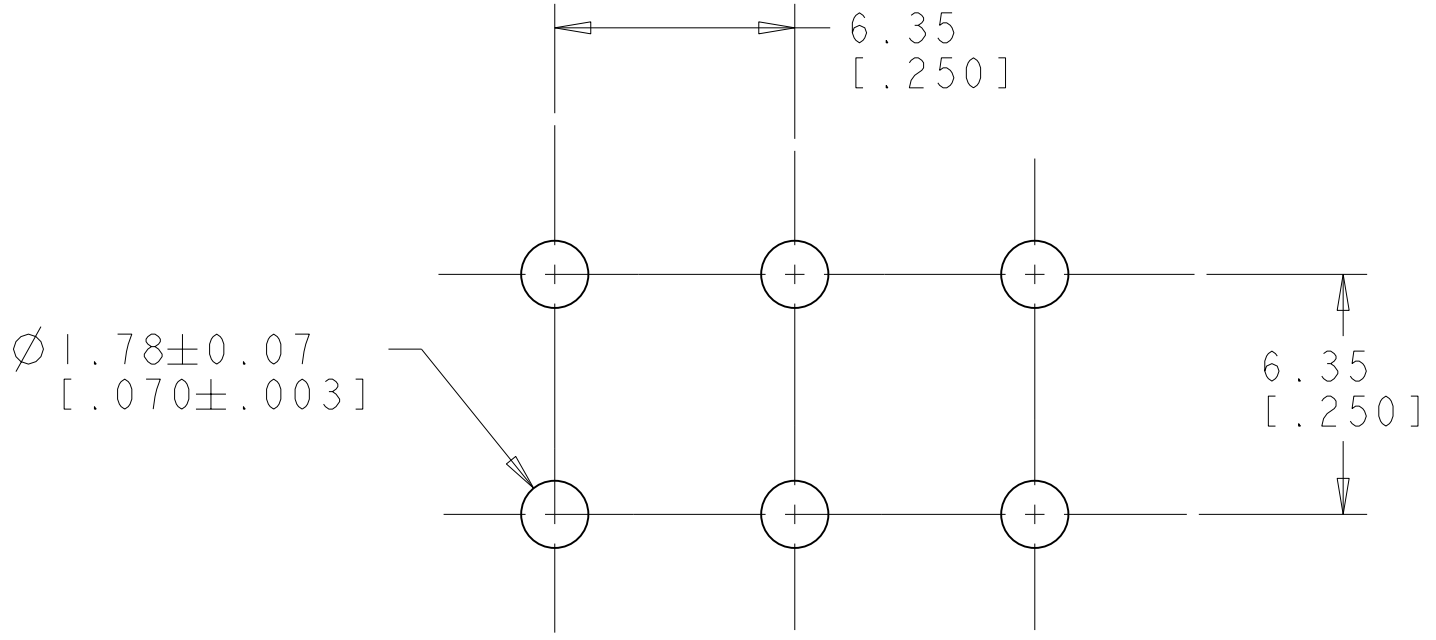
1. PARTS MATE WITH HOUSING 480704.
2. PARTS COMPLY TO AMP SOLDERABILITY SPECIFICATION 109-11-3.
3. CIRCUIT IDENTIFICATION CHARACTERS ARE ADJACENT TO THE INDICATED CAVITIES, BUT LOCATION AND ORIENTATION MAY DIFFER FROM PRINT.
4. CONTACT IS PLATED OVERALL WITH 0.00127 [.000050] NICKEL, THEN 0.00076 [.000030] GOLD OVER CONTACT LENGTH INDICATED AND TIN LEAD ON SOLDER TAIL END.
5. CONTACT IS PLATED OVERALL WITH 0.00127 [.000050] NICKEL, THEN 0.00076 [.000030] GOLD OVER CONTACT LENGTH INDICATED AND MATTE TIN ON SOLDER TAIL END.
6. DIMENSIONS IN BRACKETS ARE IN INCHES.



SECTION A-A
SCALE 10:1



3 DIMENSIONAL MODEL
SCALE 4:1



RECOMMENDED MOUNTING HOLE PATTERN
FOR 1.57 [.062] THICK P.C. BOARD

PHOSPOR BRONZE, GOLD 3	NYLON, UL94V-0, NATURAL	350711-4
PHOSPOR BRONZE, GOLD 4	NYLON, UL94V-0, NATURAL	350711-2
PHOSPOR BRONZE, PRE-TIN	NYLON, UL94V-0, NATURAL	350711-1
PIN CONTACT MATERIAL AND FINISH	HOUSING MATERIAL AND COLOR	PART NUMBER

TYP. DRAWING OF A CONTROLLED DOCUMENT FOR TYCO ELECTRONICS CORPORATION IT IS SUBJECT TO CHANGE WITHOUT NOTICE AND WITHOUT OBLIGATION SHOULD BE CONTACTED FOR THE LATEST REVISION.		DWN K. WHITAKER 18JULY2005	tyco Electronics Tyco Electronics Harrisburg, PA 17105-3608		
DIMENSIONS: mm[INCHES]		CHK S. RIDGILL 18JULY2005	NAME		
TOLERANCES UNLESS OTHERWISE SPECIFIED:		APVD S. RIDGILL 18JULY2005	PIN HEADER ASSEMBLY, 6 CIRCUIT, UNIVERSAL MATE-N-LOK(TM)		
0 PLC ±		PRODUCT SPEC			
1 PLC ±		APPLICATION SPEC			
2 PLC ±0.13(.005)		WEIGHT			
3 PLC ±		CUSTOMER DRAWING			
4 PLC ±		SCALE 1:1			
ANGLES 40° 30°		SHEET 1 OF 1			
MATERIAL SEE TABLE		REV R2			
FINISH SEE TABLE					

METRIC