

Distributed by:

JAMECO[®]
ELECTRONICS

www.Jameco.com ♦ 1-800-831-4242

The content and copyrights of the attached
material are the property of its owner.

Jameco Part Number 800391

FEATURES AND SPECIFICATIONS

Features and Benefits

- Patented new integral Terminal Position Assurance (TPA) on female and male terminal
- Virtually eliminates terminal backout
- Four points of electrical contact
- Wire to wire; wire-to-board

Reference Information

Product Specification: PS-44441-9999
 Packaging: Chain
 UL File No.: E29179
 CSA File No.: LR19980
 Use With: [44441](#) housing
 Designed In: Inches

Electrical

Voltage: 1000V
 Current: 18.0A max.*
 Contact Resistance: 10mΩ max.
 Dielectric Withstanding Voltage: 5000V
 Insulation Resistance: 1000 MΩ min.

Mechanical

Contact Insertion Force: 2 lb max.
 Contact Retention to Housing: 20 lb min.
 Wire Pull-Out Force: 20 lb min.
 Normal Force: 3 lb nominal
 Durability: 25 cycles

Physical

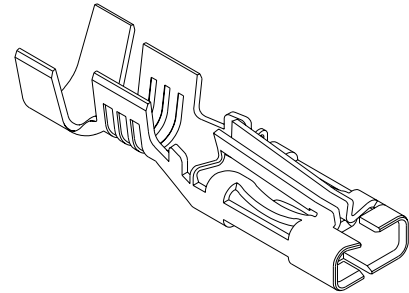
Contact: Brass
 Plating: Tin
 Operating Temperature: -40 to +75°C
 Wire Gauge: 14, 16, 18 AWG
 Insulation Diameter: 4.57mm (.180") max

* Depending on circuit size, wire gauge and PCB. Please refer to product specification.

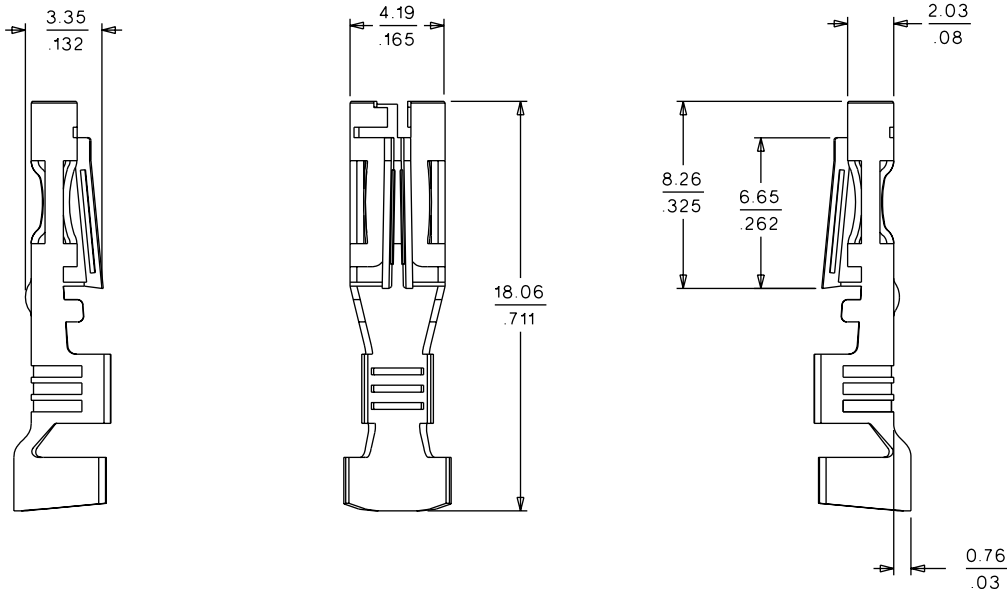


7.50mm (.295") Pitch Sabre™ Wire-to-Wire or Wire-to-Board Terminal

43375 Female



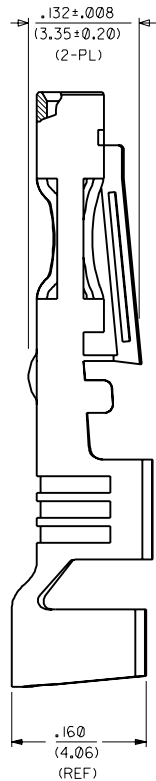
CATALOG DRAWING (FOR REFERENCE ONLY)



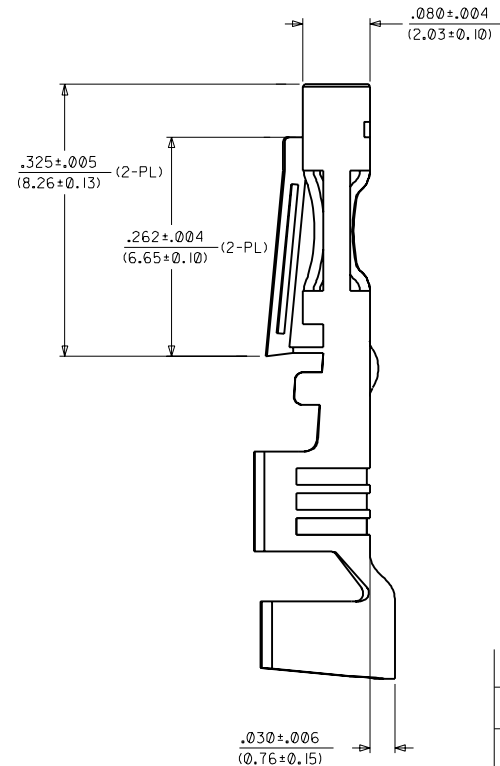
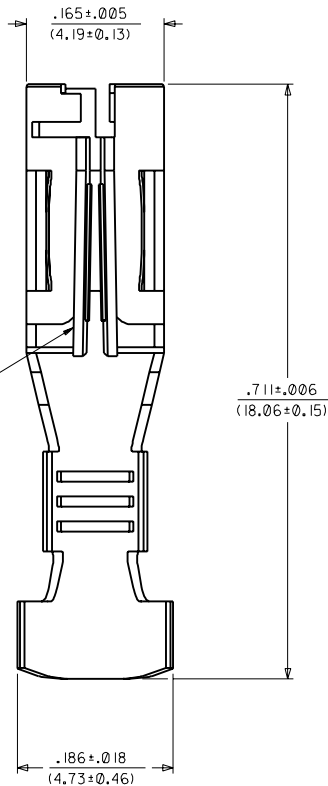
ORDERING INFORMATION AND DIMENSIONS

Order No.	Plating	Wire Size AWG	Maximum Insulation Diameter
43375-0001	Tin	14-18	3.30 (.130)
*43375-1001	Tin	14-18	4.57 (.180)

* Accommodates single or double wire crimps



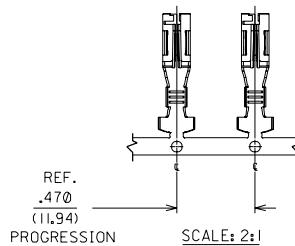
LOCK TANG BEAM
(2-PL)
(SEE NOTE 5)



SMALL INSULATION CRIMP

NOTES:

1. SINGLE CRIMP TO #18, #16 & #14 AWG WIRE, WITH .031/(0.79) MAXIMUM INSULATION THICKNESS.
2. MATERIAL: .012/(0.30) THICK C26000 BRASS.
3. FINISH: HOT TIN DIP.
4. PRODUCT SPECIFICATION : PSX-44441-9999.
5. NO PORTION OF ONE LOCK TANG BEAM SHALL TOUCH ANY PORTION OF THE OTHER LOCK TANG BEAM.



D	REVISED PER UCH1999-0340 98/12/07 LENZ
C	REVISED PER ECN UCR1999-0159 98/09/01 KBP
B	REVISED PER ECN *UR1998-0201 LENZ 98/05/05
A6	REVISED PER ECN *U70921 MARANTO 97/02/07
A5	REVISED PER ECN *U70225 MARANTO 96/08/28
A4	REVISED PER ECN *U60910 96/02/13 MAB
A3	REVISED PER ECN *U50775 95/02/05 MAB
A2	REVISED PER ECN *U50640 95/01/03 KBP
A1	REVISED PER ECN *U50353 94/10/17 MAB
A	REMOVE "X" PER ECN *U50020 94/08/05 MAB

DIMENSIONS SHOWN (METRIC) INCH		MFG. SH. REV. LTR.		REVISE ONLY ON CAD SYSTEM	
UNLESS OTHERWISE SPECIFIED TOLERANCES: ANGULAR ± 1/2°		TITLE		TERMINAL, RECEPTACLE	
INCH		METRIC		.125/(.3,18) X .020/(0.51)	
3 PLACE	± .005	---		SABRE - F.B.S. - T.P.A.	
2 PLACE	± .01	± 0.13		MOLEX INCORPORATED	
1 PLACE	---	± 0.25		SHEET NO. DATE	
DRAFT WHERE APPLICABLE MUST REMAIN WITHIN DIMENSIONS		PART NO. 43375-0001		1 OF 1 94/08/05	
DRWG. BY MAB	CHKD. BY KBP	FILE NAME SD43375X1		DRWG. NO. SD-43375-0001	
APP'D. BY RAS	SCALE 10:1	THIS DRAWING CONTAINS INFORMATION THAT IS PROPRIETARY TO MOLEX INC. AND SHOULD NOT BE USED WITHOUT WRITTEN PERMISSION.		REV. SIZE CO C	