



Hammond Mfg. Co. Ltd., Electronics Division

www.hammondmfg.com

1750WA

TUBE GUITAR AMPLIFIER - OUTPUT TRANSFORMER

- Designed for drop in replacement of original units.
- Constructed to look similar to original factory units (where possible).
- Material used & design specifications were kept as close as possible to the original part to preserve the stock "tone".
- Open style with minimum 12" long primary and secondary leads
- Frequency response 70Hz - 15KHz (0/-1dB reference @ 1KHz)
- Distortion is less than 1% @ 70Hz

ELECTRICAL SPECIFICATIONS

Characteristics		Typical
Input Impedance		2000 Ohms
Output Impedance		2, 4 & 8 Ohms
Output Power		100 W
DCR		
Primary Brown-Red		19.38 Ohm
Primary Red-Blue		20.23 Ohm
Secondary Black-Yellow		0.048 Ohm
Secondary Black-White		0.073 Ohm
Secondary Black-Green		0.132 Ohm
Inductance		
		@ 1.0 kHz, 1.0 V OC
Primary Brown-Blue		4.38 H 26.7 KOhm
Secondary Black-Yellow		6.52 mH 101.6 Ohm
Secondary Black-White		12.83 mH 192.9 Ohm
Secondary Black-Green		26.41 mH 353.6 Ohm
Leakage Inductance		
		@ 1.0 kHz, 1.0 V SC
Primary Brown-Blue		88.36 mH
Dielectric Strength		
		2000VRMS
Temperature Range		-40 to 105 degC

TEST CONDITIONS

Measurement instruments:

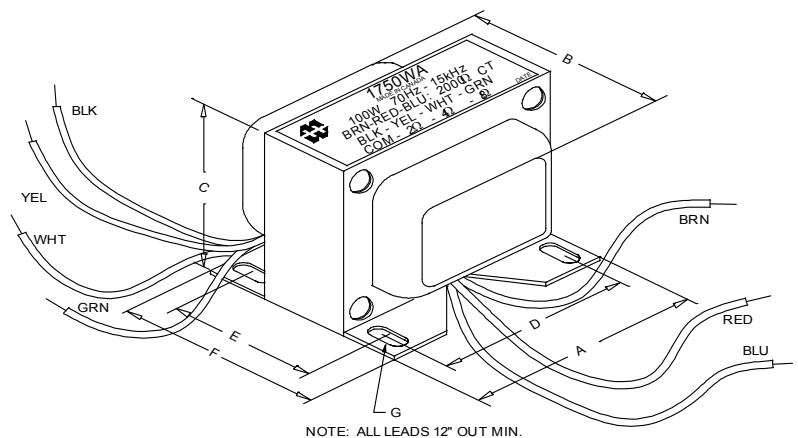
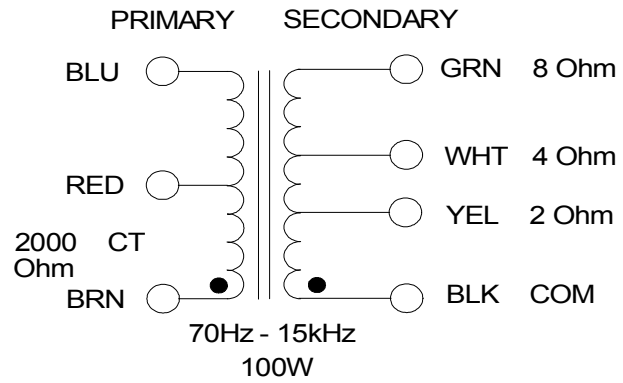
D scope series iii audio analyzer
Wayne Kerr 3255B with a 3265B

Keithley 2010 DVM

Hp4192a impedance analyzer

* All graphs input level 27dBu @1.0KHz reference.

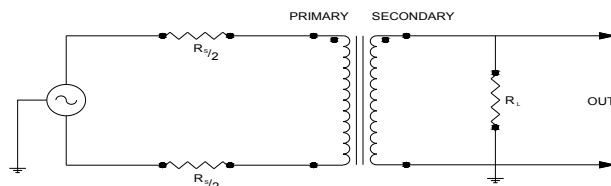
**The results are typical and are subject to normal manufacturing and electrical tolerances.



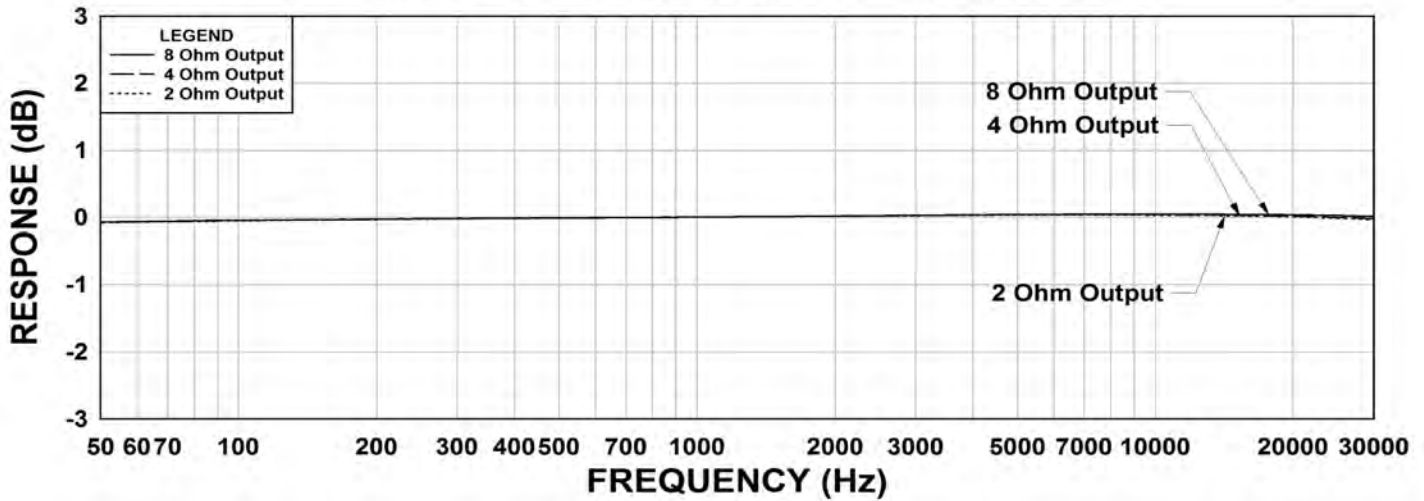
Dimensions

A	4.063" ±0.063	E	2.250" ±0.063
B	3.450" ±0.125	F	2.800" ±0.063
C	3.500" ±0.063	G	0.187" X 0.300"
D	3.500" ±0.063		±0.015

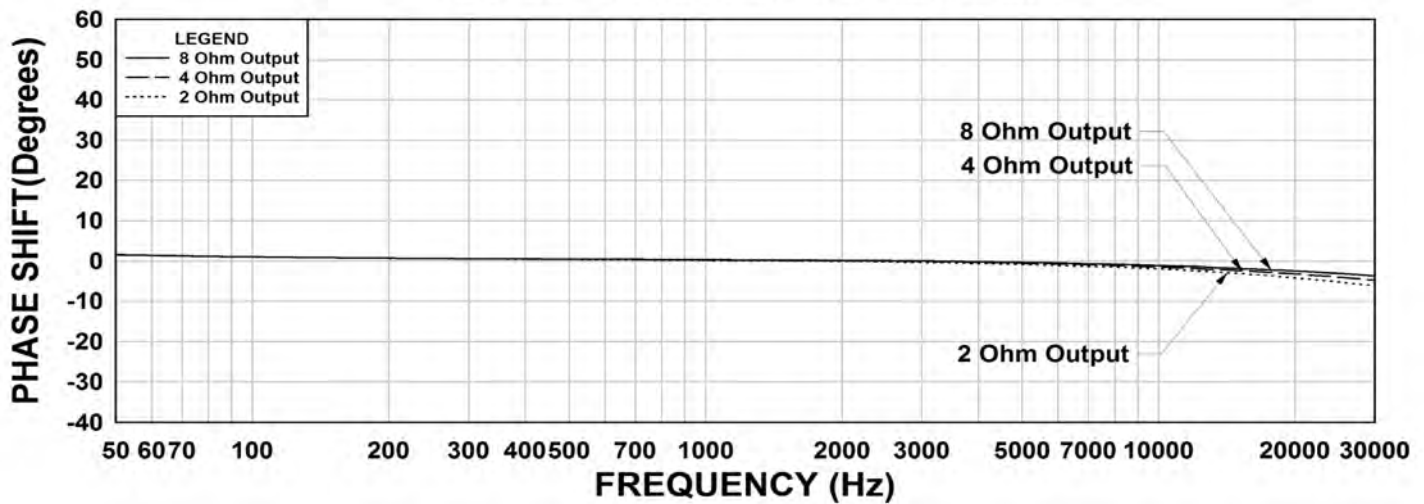
TYPICAL TEST CIRCUIT



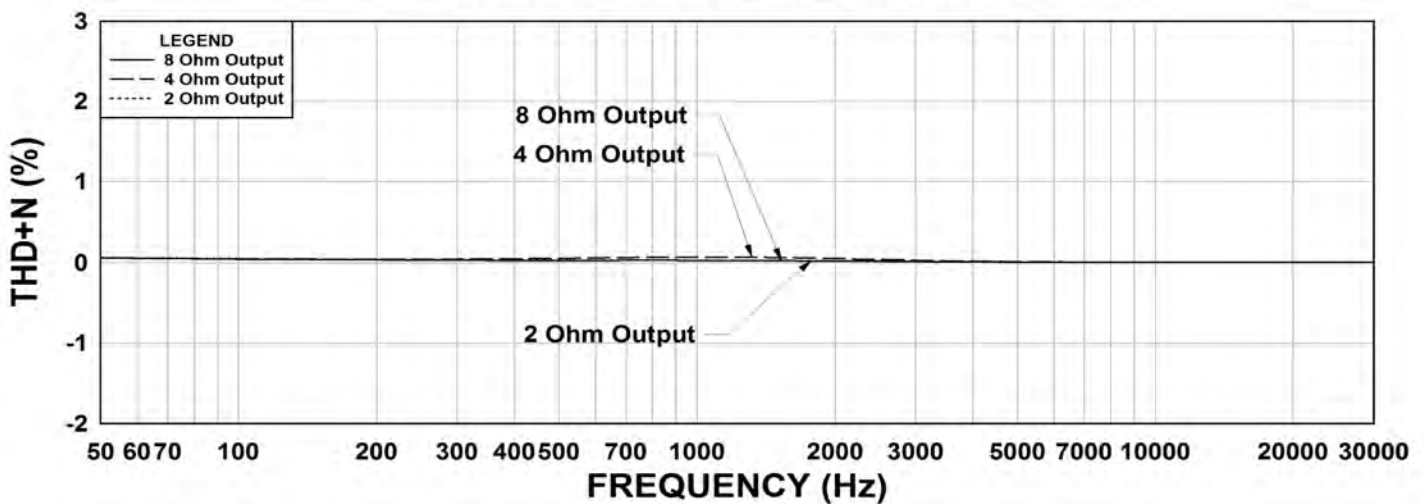
1750WA Frequency Response RS = 2K Ohms



1750WA Phase Shift RS = 2K Ohms



1750WA THD+N RS = 2K Ohms



This drawing and the information in it is the property of Hammond Manufacturing. It may not be reproduced, transmitted or used in any manner whatsoever without the written permission of Hammond Manufacturing. Data subject to change without notice.