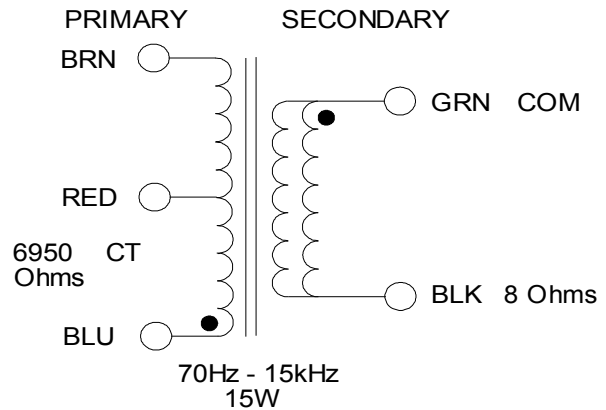


# 1750F

## TUBE GUITAR AMPLIFIER - OUTPUT TRANSFORMER

- Designed for drop in replacement of original units.
- Constructed to look similar to original factory units (where possible).
- Material used & design specifications were kept as close as possible to the original part to preserve the stock "tone".
- Open style with minimum 7" long primary and secondary leads
- Frequency response 70Hz - 15KHz (0/-1.5dB reference @ 1KHz)
- Distortion is less than 3% @ 70Hz



## ELECTRICAL SPECIFICATIONS

Characteristics		Typical	
Input Impedance		6950 Ohms	
Output Impedance		8 Ohms	
Output Power		15W	
DCR			
Primary Red-Brown		97.36 Ohms	
Primary Red-Blue		97.36 Ohms	
Secondary Black-Green		0.409 Ohm	
Inductance	Impedance	@ 1.0 kHz, 1.0 V OC	
Primary Blue-Brown		3.99H	24.8K Ohm
Secondary Black-Green		8.71mH	66.28 Ohm
Leakage Inductance		@ 1.0 kHz, 1.0 V SC	
Primary Blue-Brown		7.03mH	
Dielectric Strength		1500VRMS	
Temperature Range		-40 to 105 degC	

## TEST CONDITIONS

Measurement instruments:

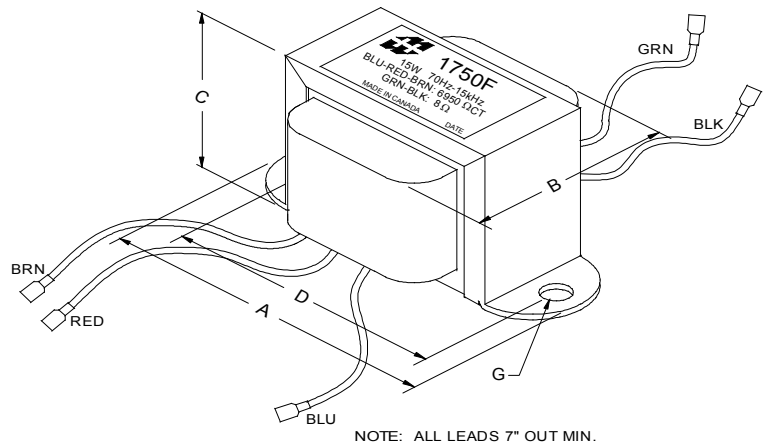
D scope series iii audio analyzer  
Wayne Kerr 3255B with a 3265B

Keithley 2010 DVM

Hp4192a impedance analyzer

\* All graphs input level 27dBu @ 1.0KHz reference.

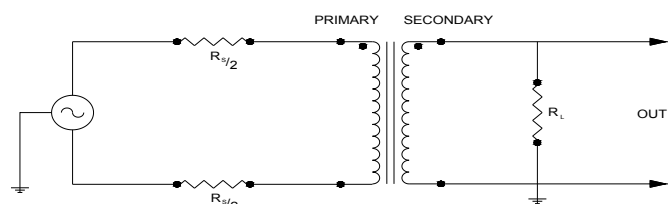
\*\*The results are typical and are subject to normal manufacturing and electrical tolerances.



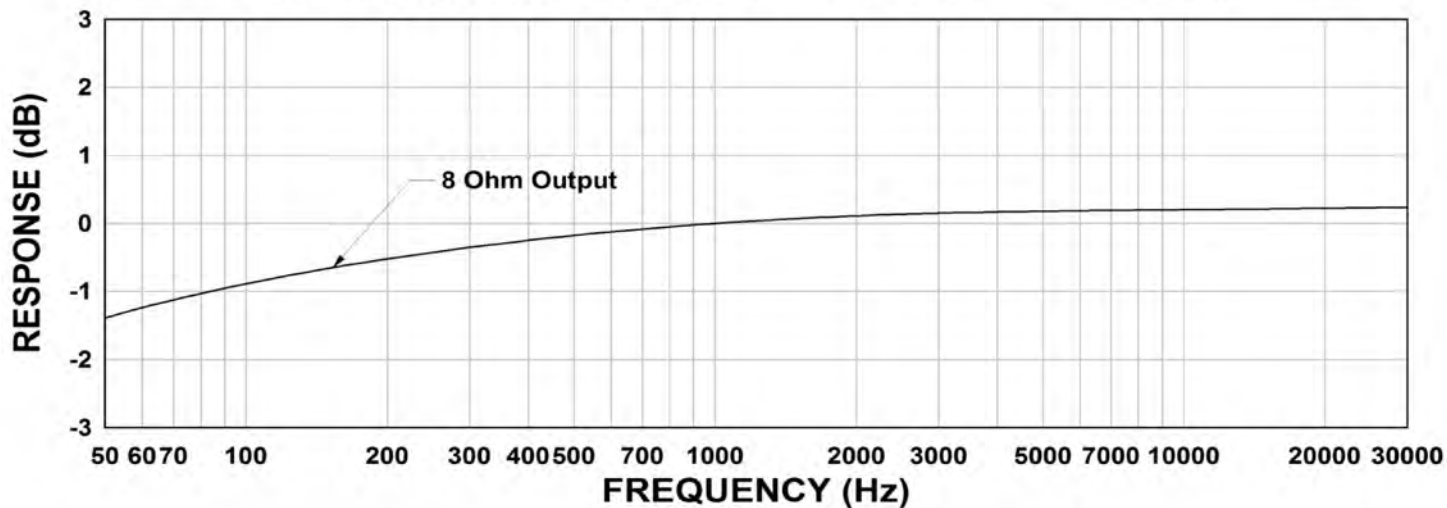
## Dimensions

A	3.250" ±0.063	D	2.813" ±0.063
B	1.687" ±0.125	G	0.187" ±0.015
C	1.995" ±0.063		

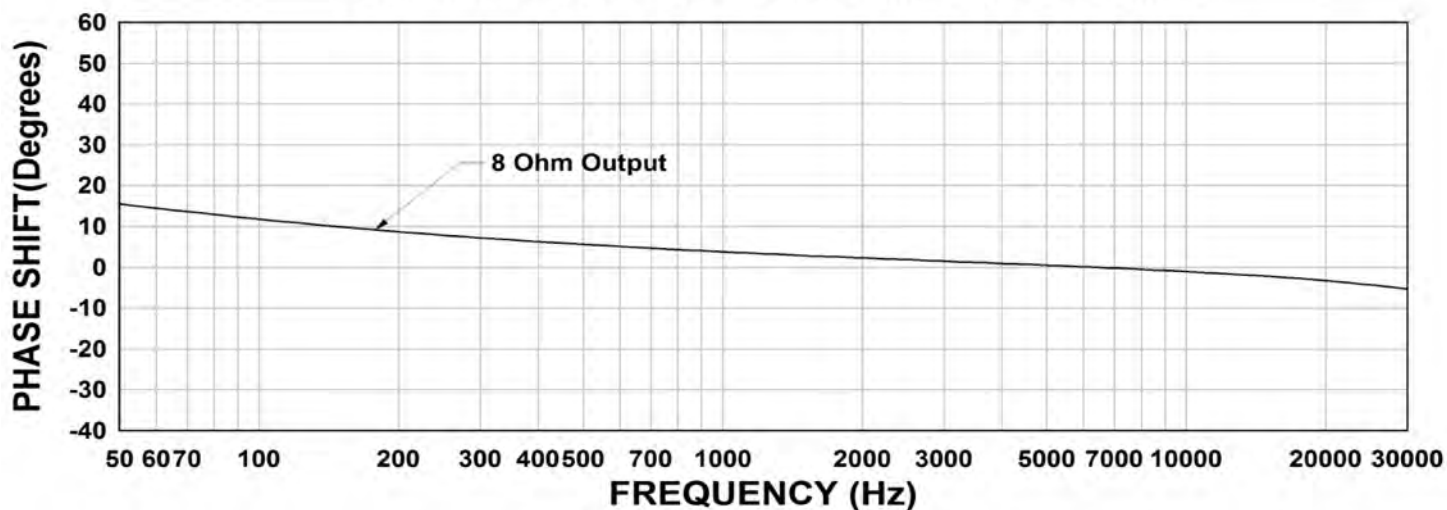
## TYPICAL TEST CIRCUIT



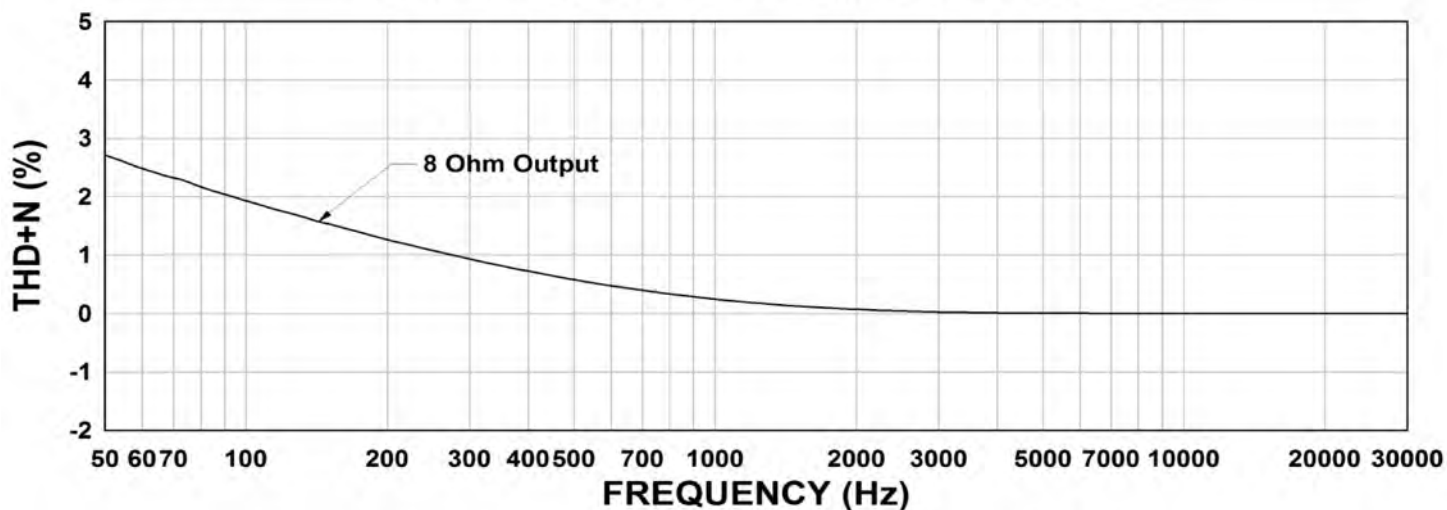
**1750F Frequency Response RS = 6950 Ohms RL = 8 Ohms**



**1750F Phase Shift RS = 6950 Ohms RL = 8 Ohms**



**1750F THD+N RS = 6950 Ohms RL = 8 Ohms**



This drawing and the information in it is the property of Hammond Manufacturing. It may not be reproduced, transmitted or used in any manner whatsoever without the written permission of Hammond Manufacturing. Data subject to change without notice.