

Distributed by:

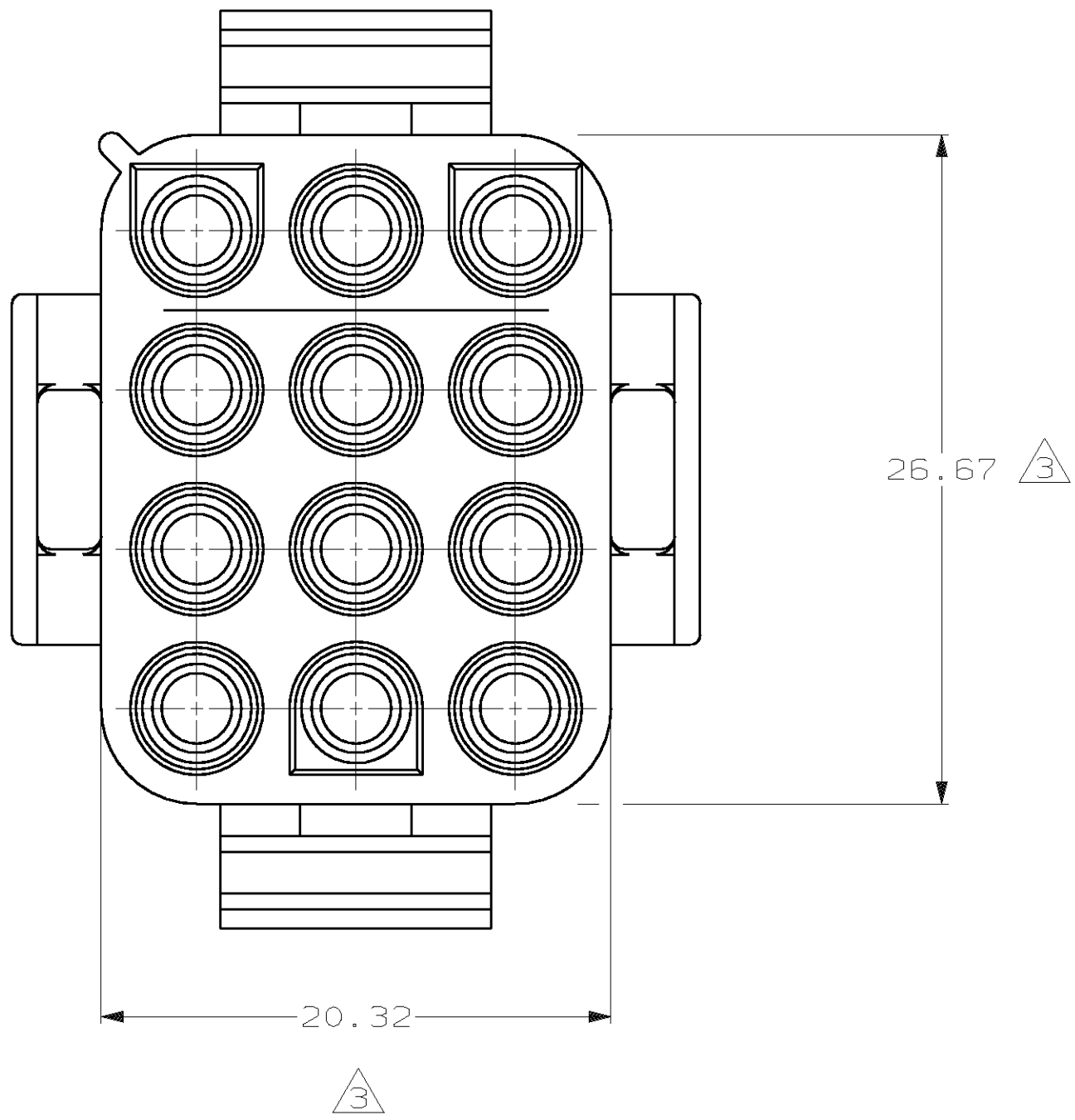
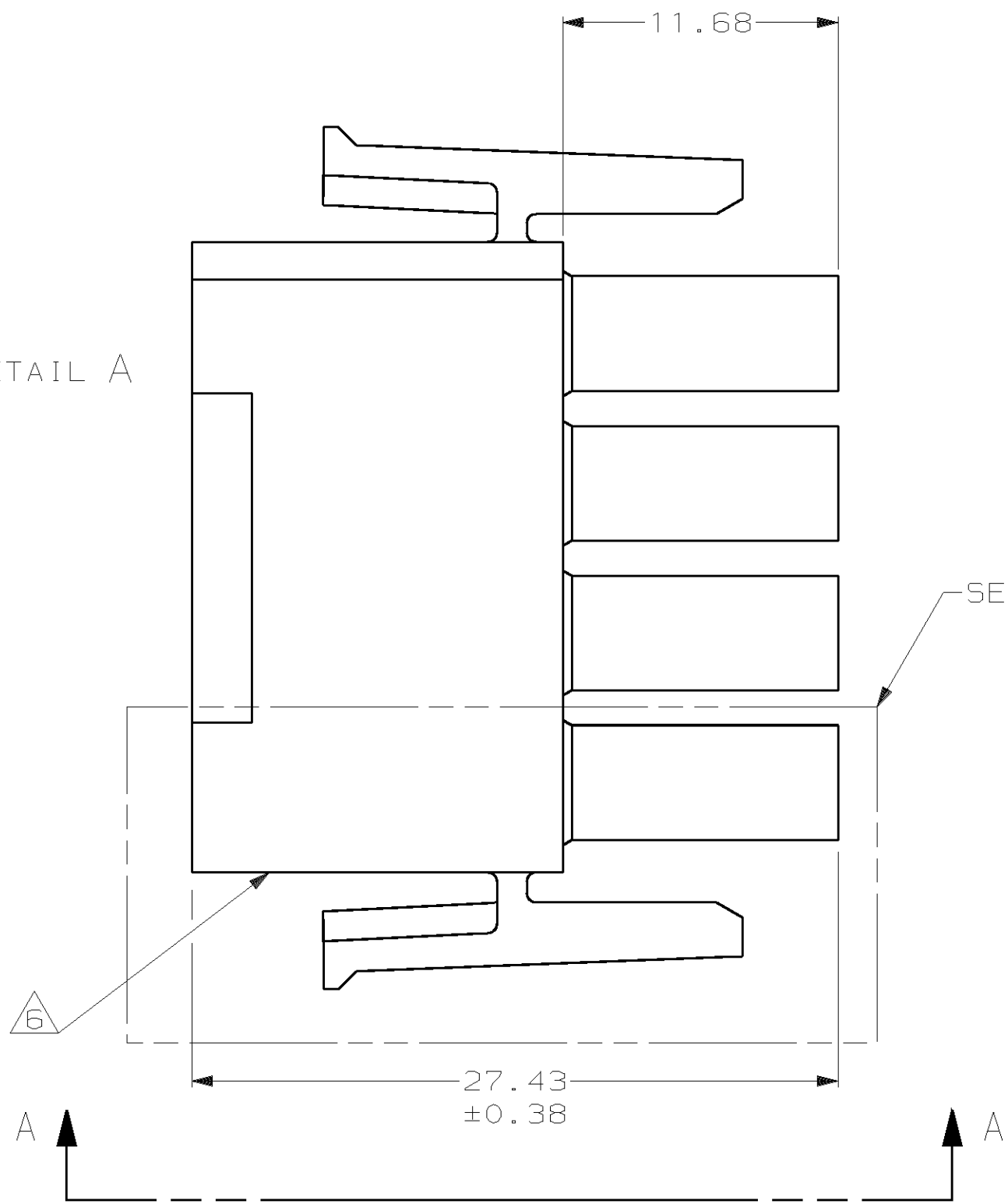
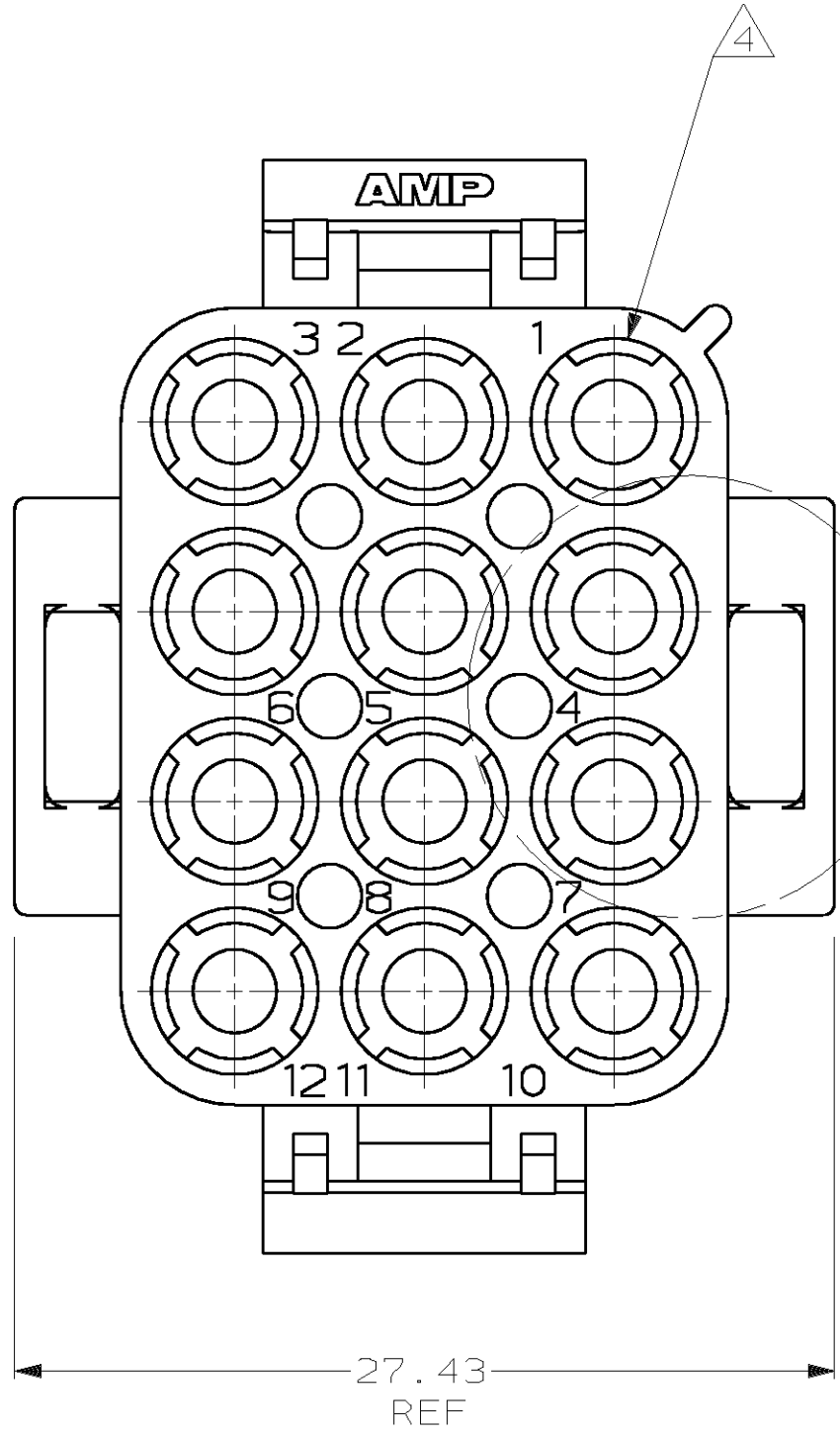
**JAMECO**<sup>®</sup>  
ELECTRONICS

**www.Jameco.com ♦ 1-800-831-4242**

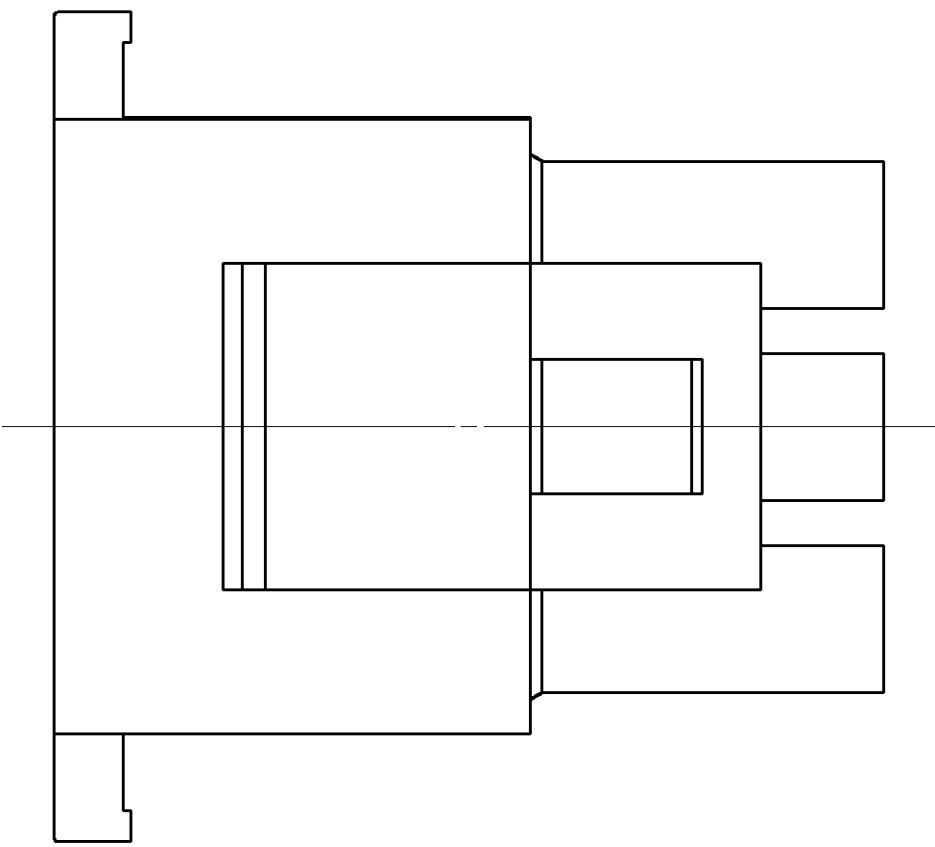
The content and copyrights of the attached  
material are the property of its owner.

Jameco Part Number 495728

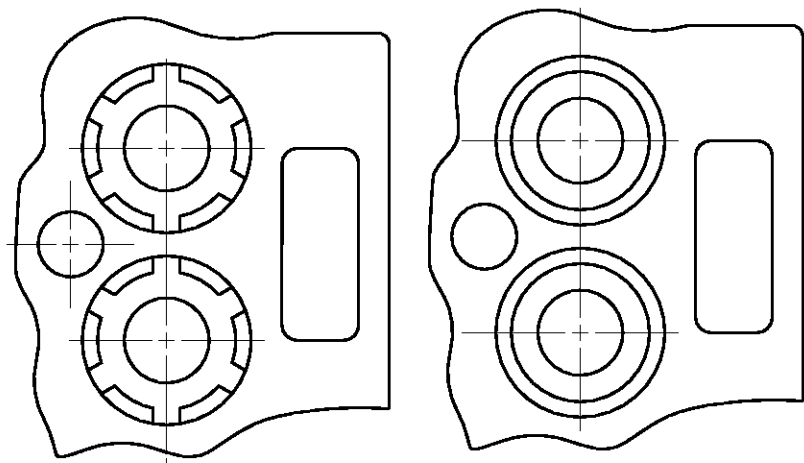
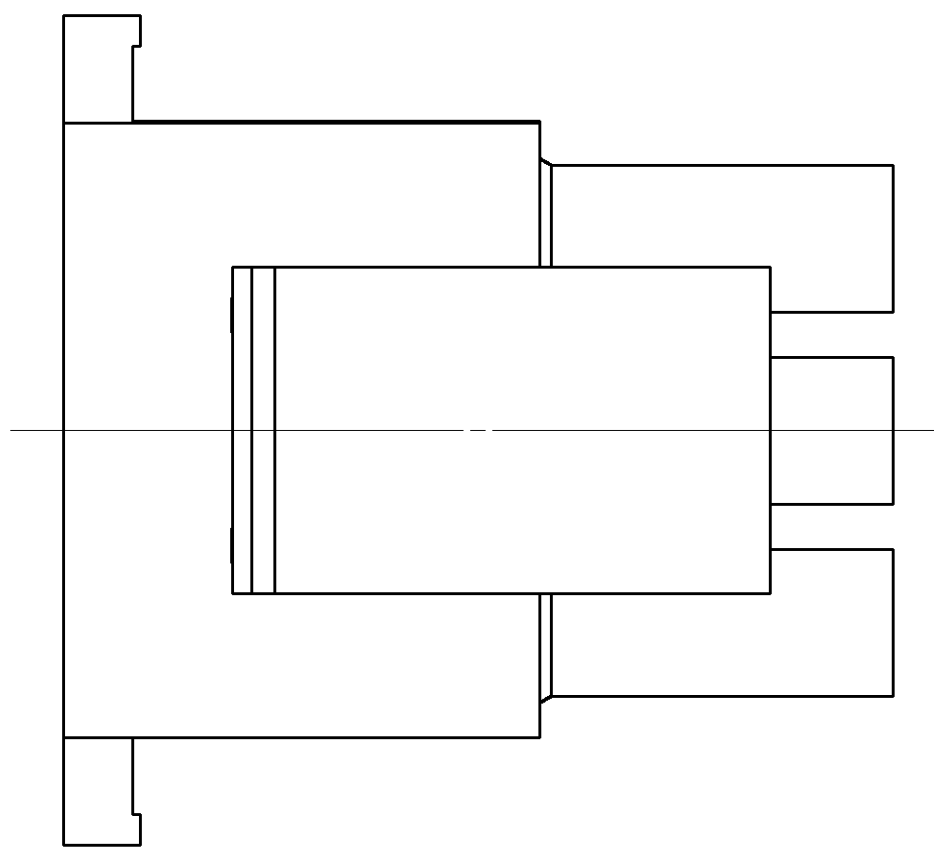
LOC		DIST		P		F		ZONE		LTR		REVISIONS		DATE		APPD	
CM		53										DESCRIPTION					
												U	REV PER EC 061B-0229-98		17-FEB-99	JH	RS



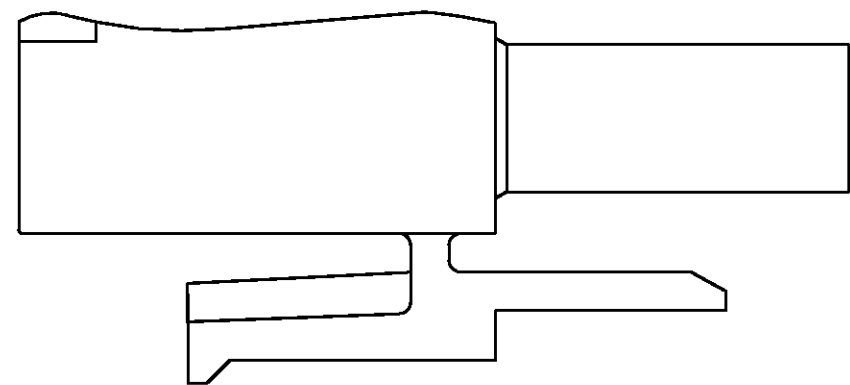
- MATES WITH APPROPRIATE UNIVERSAL MATE-N-LOK™ CAP OR HEADER.
  - SMALL NICKS ARE PERMITTED ON THE CIRCUIT TOWERS WHICH COULD INCREASE THE INITIAL HOUSING MATING FORCE BY UP TO 4.4 NEWTONS [1.0 LBS]. NO INDIVIDUAL NICKED TOWER SHALL INCREASE THIS FORCE BY OVER 2.2 NEWTONS [0.5 LBS].
- △3 DIMENSION INDICATED IS AS MOLDED. ADDITIONAL GROWTH DUE TO SUBSEQUENT MOISTURE ABSORPTION MAY OCCUR.
- △4 FOUR RIBS EQUALLY SPACED, NO SPECIFIC ORIENTATION. NO RIBS OR SIX RIBS EQUALLY SPACED, NO SPECIFIC ORIENTATION, OPTIONAL.
- △5 NOT MANUFACTURED IN U.S.
- △6 UNDERWRITERS RECOGNIZED COMPONENT LOGO AND CSA CERTIFICATION LOGO TO BE LOCATED ONCE EACH ON SIDE OF HOUSING.



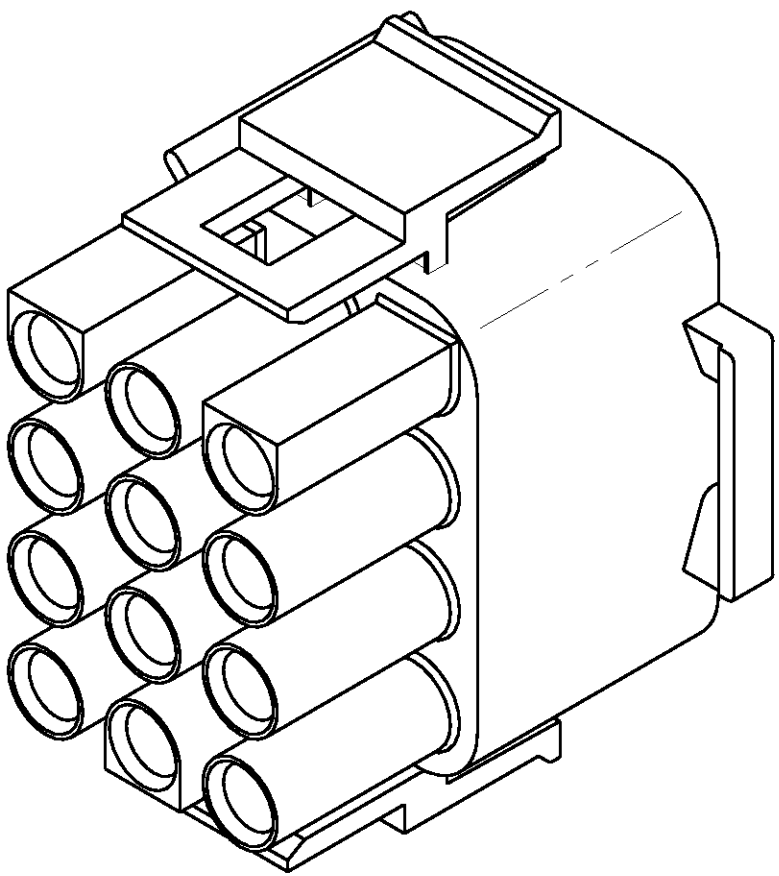
VIEW A-A  
350735-4 ONLY



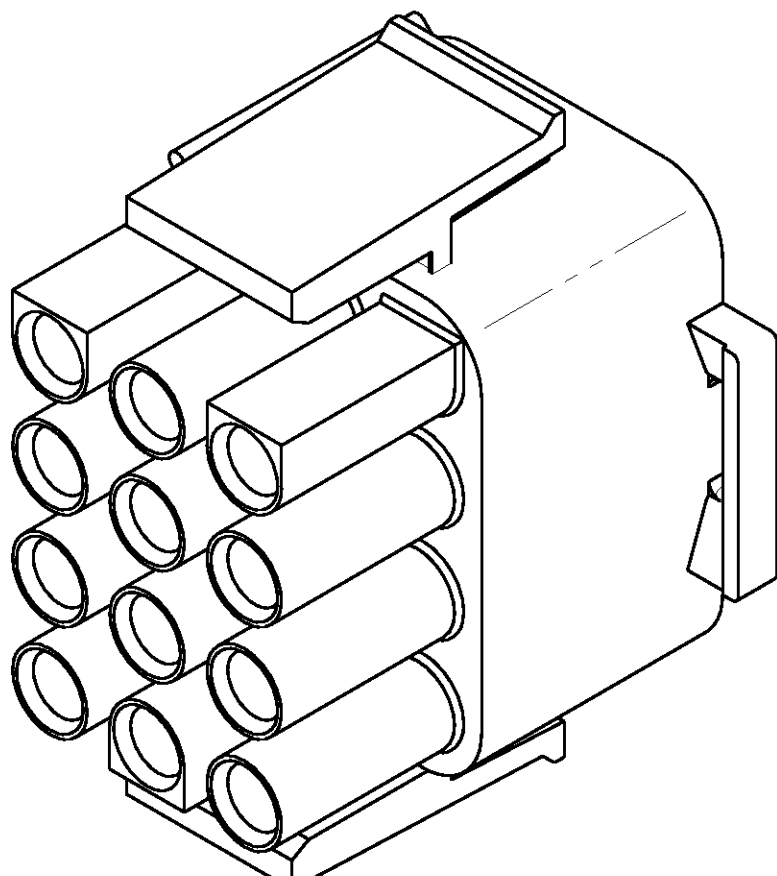
DETAIL A  
OPTIONAL CONSTRUCTIONS



DETAIL B  
350735-4 ONLY



350735-4 3-DIMENSIONAL MODEL  
NTS



3-DIMENSIONAL MODEL  
NTS

27.43	1.080
26.67	1.050
20.32	.800
11.68	.460
0.38	.015
0.13	.005
MM	IN
CONVERSION TABLE	

METRIC

DO NOT SCALE PRINT. UNLESS SPECIFIED DIMENSIONS IN mm [INCHES] TOLERANCES - ON: 2 PLC DEC ± 0.13 3 PLC DEC ± 0.30' ANGLES ± 0°30'		DR 2-17-92 K. WHITAKER	<b>AMP</b> AMP Incorporated Harrisburg, PA 17105-3608			
MATERIAL NYLON, UL 94V-0		CHK 2-17-92 R. SWING				
FINISH		APPD 2-24-92 D. SELF	NAME			
		APPD 2-24-92 D. SELF	PLUG, 12 CIRCUIT, UNIVERSAL MATE-N-LOK™			
		PRODUCT SPEC -				
		APPLICATION SPEC -	SIZE <b>D</b>	CAGE CODE 00779	DRAWING NO 350735	
		WEIGHT -	SCALE 4:1		SHEET 1 OF 1	