

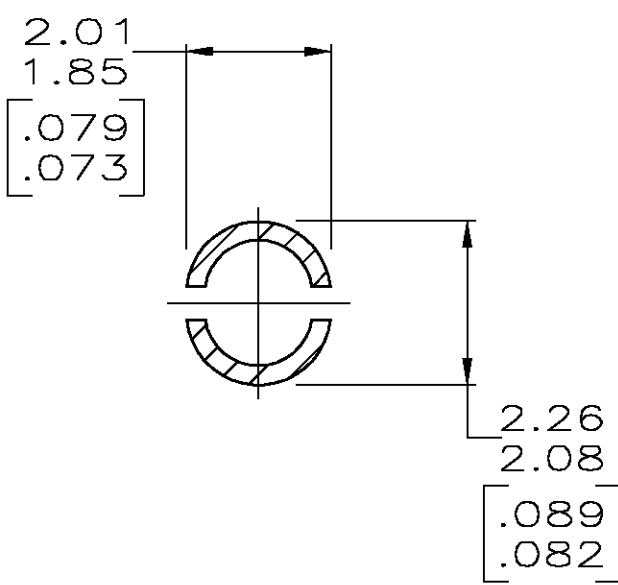
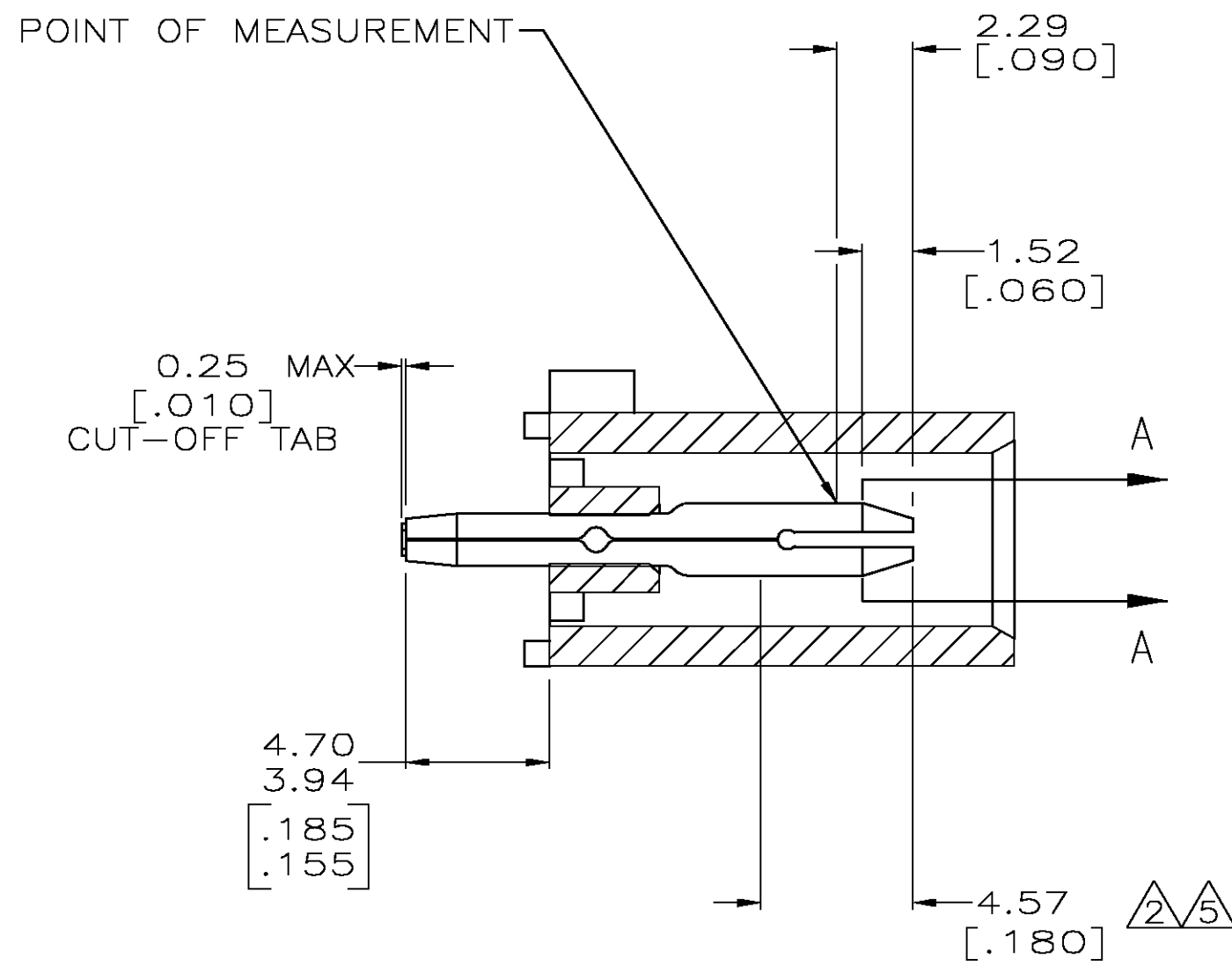
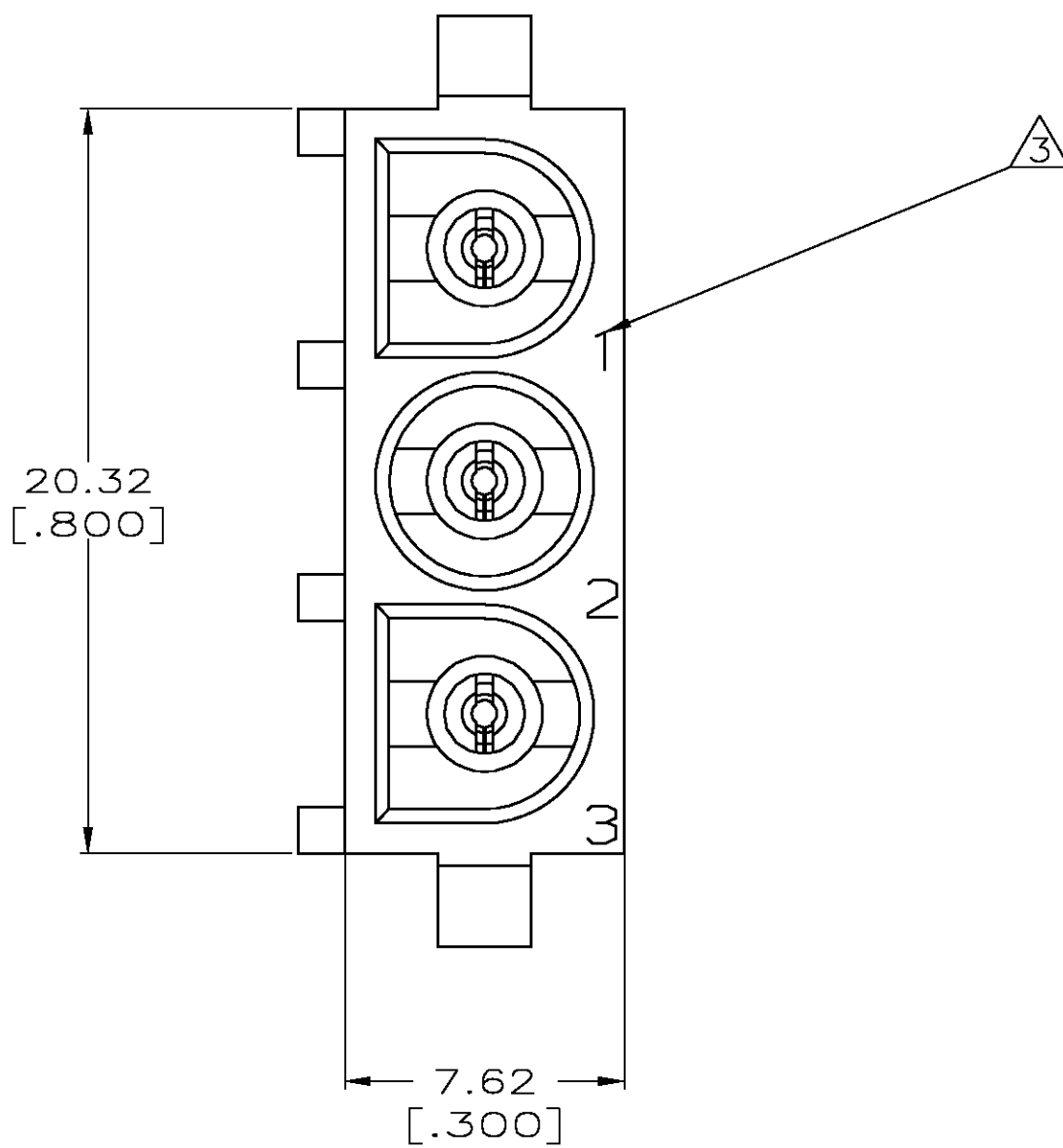
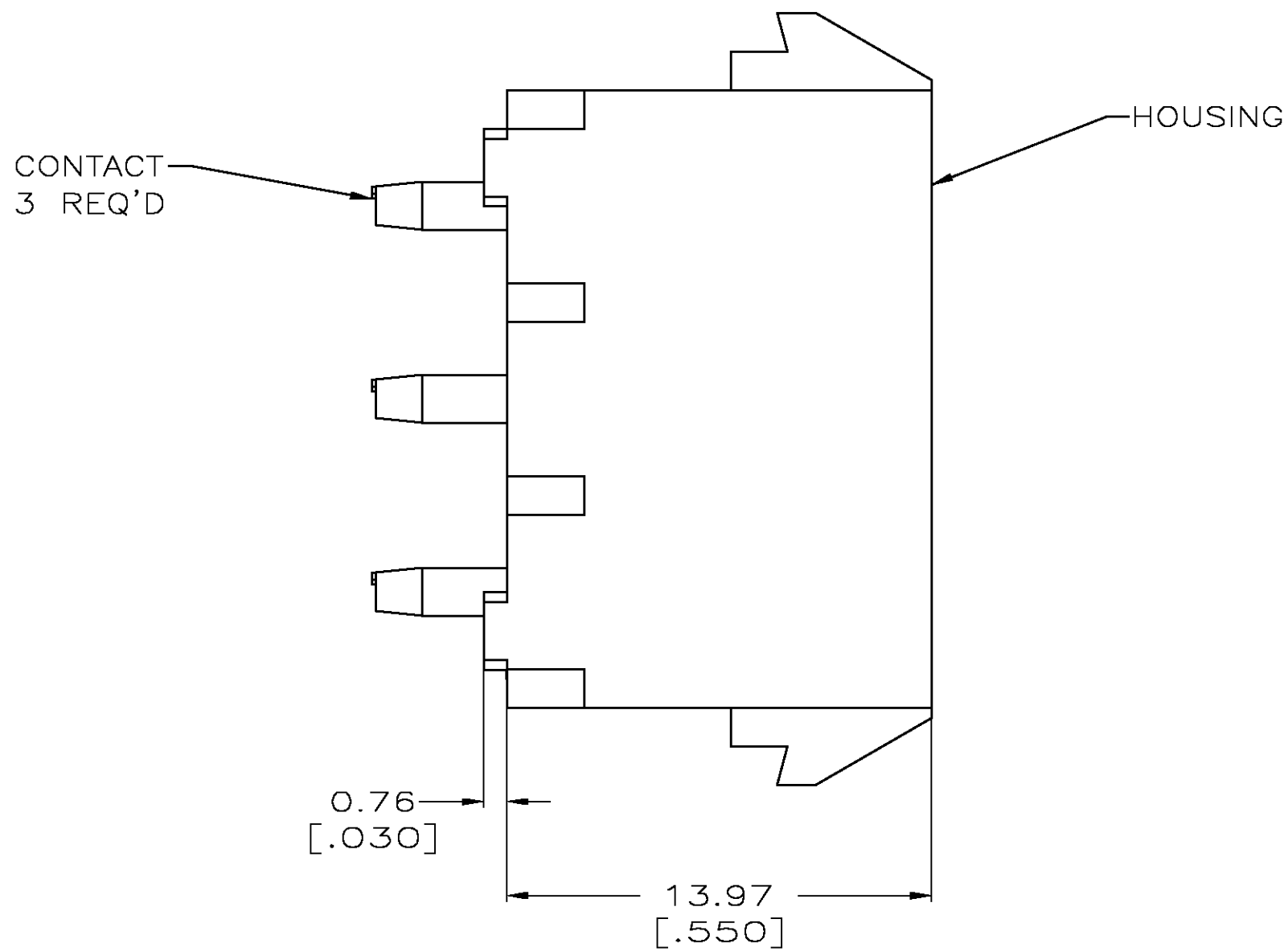
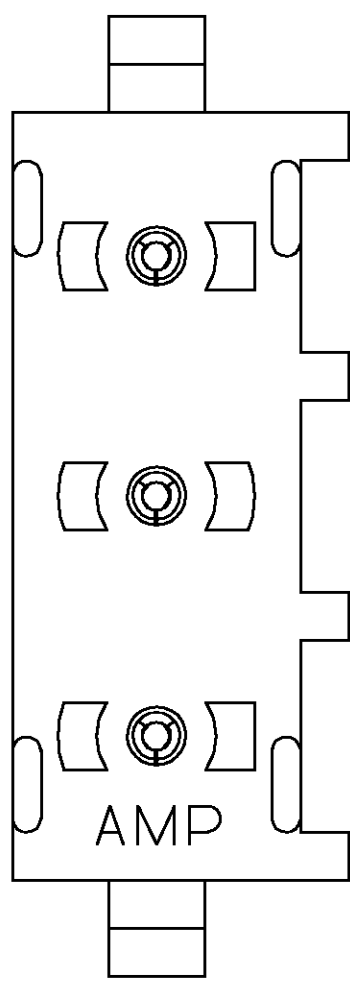
Distributed by:

JAMECO[®]
ELECTRONICS

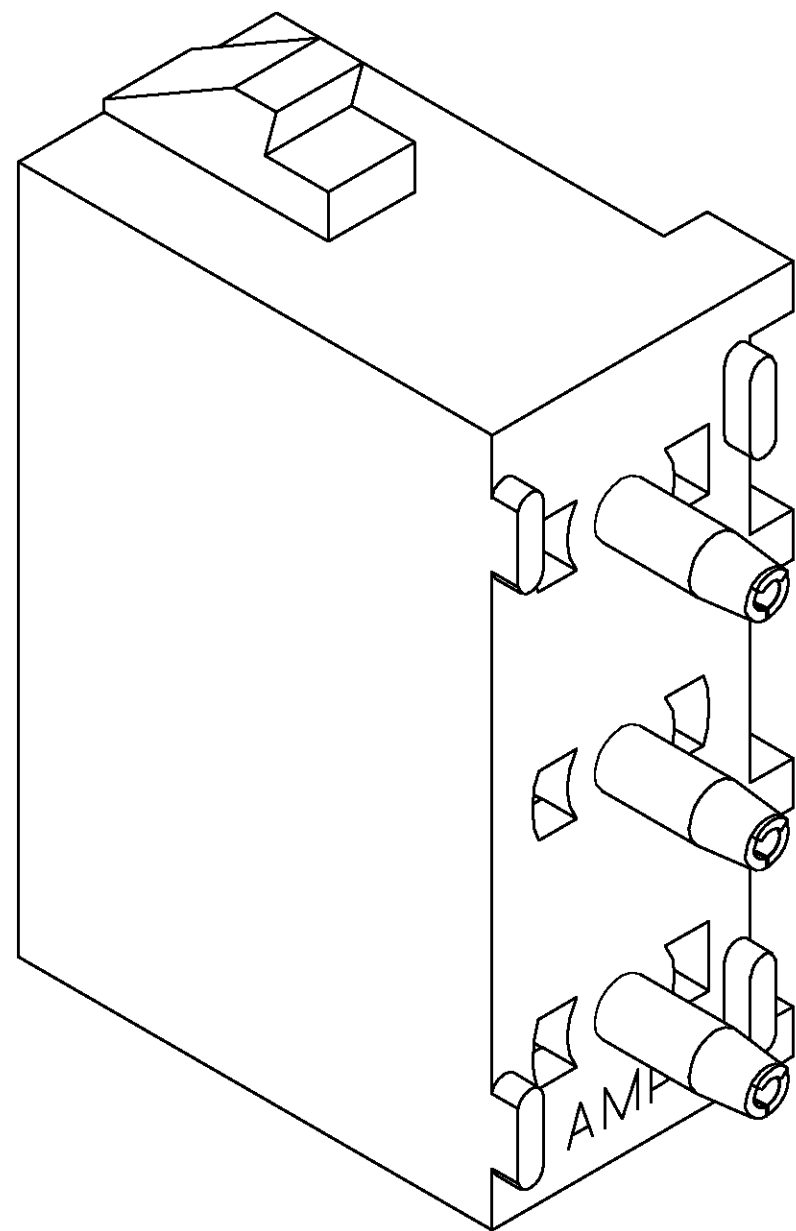
www.Jameco.com ♦ 1-800-831-4242

The content and copyrights of the attached
material are the property of its owner.

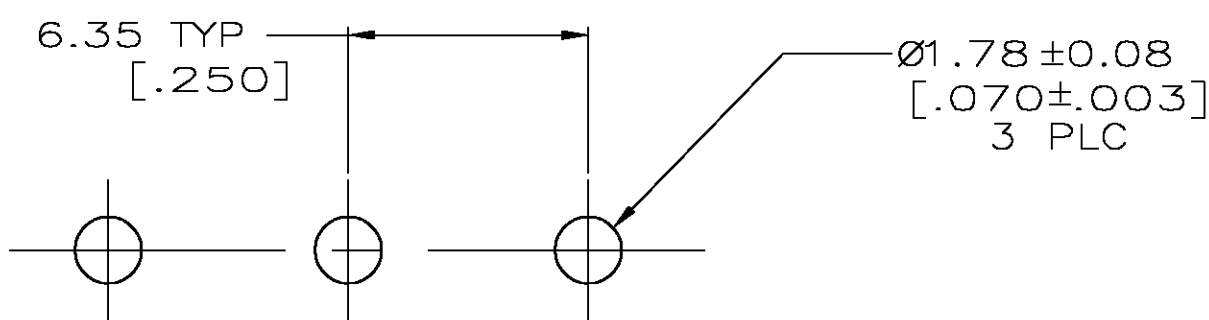
Jameco Part Number 495613



SECTION A-A
SCALE 10:1




3-DIMENSIONAL MODEL
NTS



RECOMMENDED MOUNTING HOLE PATTERN
FOR 1.57 [.062] THICK P.C. BOARD

1. PARTS COMPLY TO AMP SOLDERABILITY SPECIFICATION 109-11-3.
- CONTACT IS PLATED OVERALL WITH 0.00127 [.000050] NICKEL, THEN 0.00076 [.000030] GOLD OVER CONTACT LENGTH INDICATED AND MATTE TIN LEAD ON SOLDER TAIL END.
- CIRCUIT IDENTIFICATION CHARACTERS ARE ADJACENT TO THE INDICATED CAVITIES, BUT LOCATION AND ORIENTATION MAY DIFFER FROM PRINT.
4. DIMENSIONS IN BRACKETS ARE IN INCHES.
- CONTACT IS PLATED OVERALL WITH 0.00127 [.000050] NICKEL, THEN 0.00076 [.000030] GOLD OVER CONTACT LENGTH INDICATED AND MATTE TIN ON SOLDER TAIL END.

PHOSPHOR BRONZE, GOLD	NYLON, UL94V-2,NATURAL	350429-4
PHOSPHOR BRONZE, GOLD	NYLON, UL94V-2,NATURAL	350429-2
PHOSPHOR BRONZE, PRE-TIN	NYLON, UL94V-2,NATURAL	350429-1
PIN CONTACT MATERIAL AND FINISH	HOUSING MATERIAL	PART NUMBER

THIS DRAWING IS A CONTROLLED DOCUMENT.		DWG B. LEWIS	8-19-98	tyco Electronics	Tyco Electronics Corporation Greensboro, NC 27409	
		CHK R. SWING	8-19-98			
DIMENSIONS: mm [INCHES]	TOLERANCES UNLESS OTHERWISE SPECIFIED:	APVD M. TRULL	8-19-98	NAME	PIN HEADER ASSEMBLY, 3 CIRCUIT	
		PRODUCT SPEC			UNIVERSAL MATE-N-LOK™	
	ANGLES ± 0° 30'	APPLICATION SPEC		SIZE	CAGE CODE	DRAWING NO
		WEIGHT	—		A1	00779
MATERIAL SEE TABLE	FINISH SEE TABLE	CUSTOMER DRAWING			SCALE	5:1
					SHEET	1 of 1
					REV	Y