

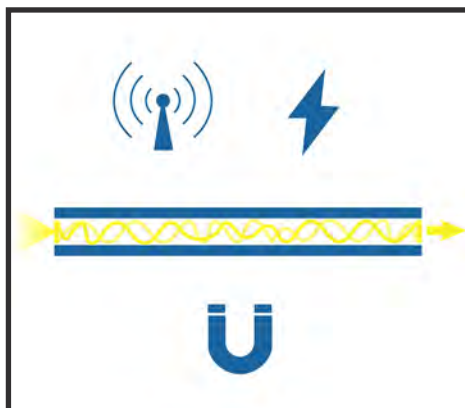
## SW-581

## INDUSTRIAL GIGABIT SFP MEDIA CONVERTER (SFP module not included)

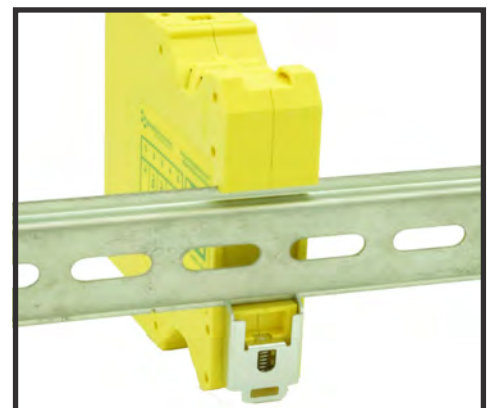
- Cost-effective connectivity - economical way to integrate devices into a fibre optic network
- Plug and play integration - simple, targeted setup
- Allows for extended range and reliability of fibre optics
- Easy transition - bridge legacy devices and newer fibre optic infrastructure
- Industrial temperature range: -40°C to +80°C/-40°F to +176°F - works in extreme conditions
- Jumbo Frame support up to 9K frames
- Integral DIN mount
- SFP Port Power Overcurrent protection



Scalability: combine with other switches in the range to create a comprehensive and future-proof network solution



Fibre cables are immune to any electrical/magnetic interference, and require no cumbersome isolation devices to guard against high EMI/RFI or lightning strikes



Integral DIN mount and slim design takes up minimal cabinet space

## SW-581

## INDUSTRIAL GIGABIT SFP MEDIA CONVERTER

Jumbo Frame support up to 9k frames

All Ethernet ports are Auto MDI/MDIX supporting straight through or crossover Ethernet cables

Integral DIN mount with ground

Automatic detection of data transmission speed: 10 or 100 or 1000 Mbps

SFP Power Current Overprotection



-40°C to +80°C/-40°F to +176°F temperature range

Non-conducting polyamide case

Compact case - all round small profile

Power consumption is optimised based on the status of the link device

Dual redundant power input: +5VDC to +30VDC

Easy Wire Removable screw terminal block

### Connectors

Screw Terminals	3.5mm pitch, #22 - #14, 0.5mm <sup>2</sup> -2.5mm <sup>2</sup> pin power supply
Wire Thickness	0.150 inch, 3.81mm, 20 pins, 12+8 screw terminals, #26 - #16 AWG, 0.14mm <sup>2</sup> -1.3mm <sup>2</sup>

### Power Supply

Power Consumption	3.3 W
Power Supply input	Unregulated +5V to +30Volts DC, reverse polarity protection
Isolation	1500VRMS Magnetic Isolation from Twisted Pair Ethernet

### Environmental

Operating Temperature	-40°C to +80°C/-40°F to +176°F
Storage Temperature	-40°C to +80°C/-40°F to +176°F
Ambient Relative Humidity	5 to 95% (non-condensing)

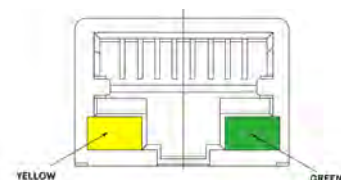
### SFP/Power LED:

### Magjack LEDs:

Power on: Green  
 SFP plugged in: Amber  
 SFP activity: Amber Flashing  
 SFP Error/Incompatible: Green/Amber Flashing

Link/Activity  
 Solid: Connection established  
 Flashing: Data communication

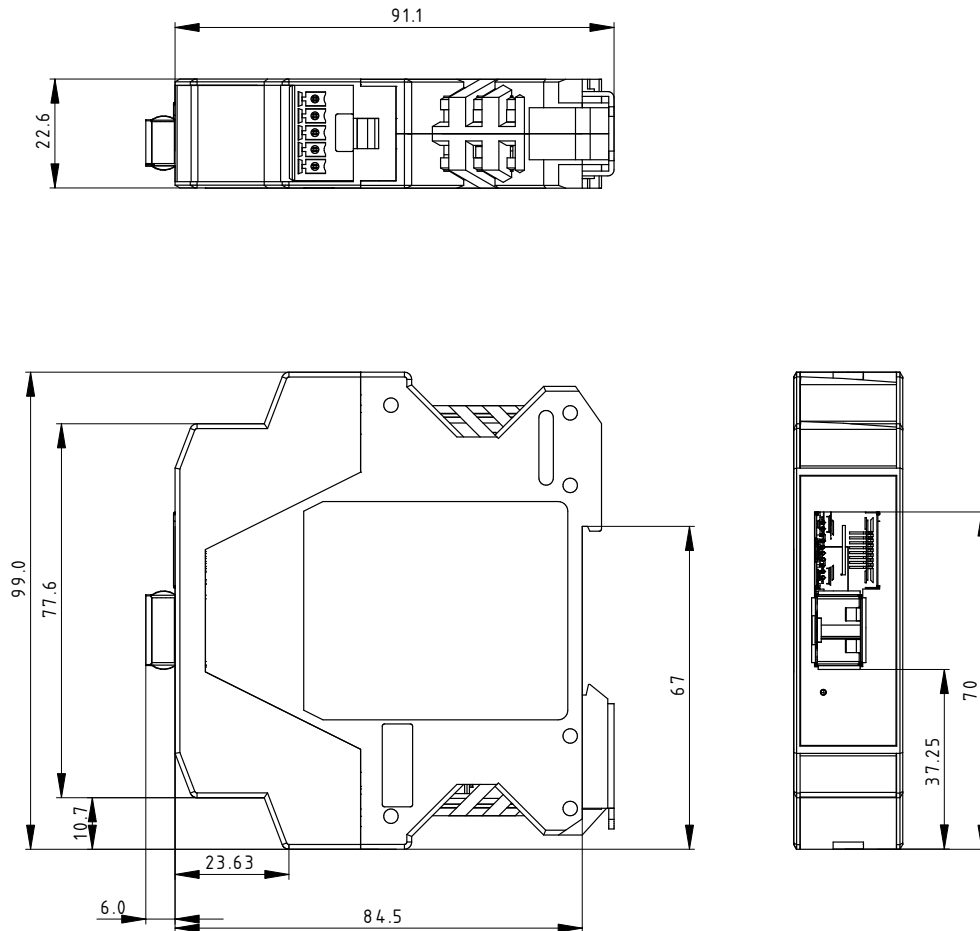
Speed  
 Yellow: 1000Mbps  
 Green: 100Mbps



Ethernet	1 x RJ45 jack, 10/100/1000Mbps autosensing, crossover auto sensing (Auto MDIX), 1 x SFP 1000BASE-X Port
Protection	1,500 Volts magnetic isolation between ports
Housing	IP-20 rated non-conducting polyamide case

SW-581

INDUSTRIAL GIGABIT SFP MEDIA CONVERTER



Power Terminal Pin Outs

PIN	FUNCTION
1	-V
2	+VA
3	+VB
4	-V
5	Functional Earth

Ethernet Ports x1 Pin Outs

PIN	FUNCTION
1	TxRxA+
2	TxRxA-
3	TxRxB+
4	TxRxC+
5	TxRxC-
6	TxRxB-
7	TxRxD+
8	TxRxD-

Lifetime Warranty and Support:

We can help with every aspect of your project, from getting you up and running to custom application.

SW-581

INDUSTRIAL GIGABIT SFP MEDIA CONVERTER

#### Packaging Information

Packaging	Quick Start Guide
Device	Industrial Gigabit SFP Media Converter
Packaged Weight	0.2045kg, 0.45lbs
Packaged Dims	160x135x49 mm, 6.3x5.3x1.9 inches
GTIN Universal Code	837324005042

#### Approvals

Industry Approvals	Microsoft Certified Gold Partner, WEEE, RoHS, AEO (C-TPAT), CE, UKCA, METL Complies with UL62368-1
--------------------	--

#### Product Support

Warranty	Lifetime - online registration required
Support	Lifetime web, email and phone support from fully qualified, friendly staff who work in and alongside the Product Development Team

#### Additional Information

OEM option	Available for bulk buy OEM
Made In	Manufactured in Great Britain (GB) by Brainboxes
Customisable	Brainboxes operate a 'Perfect Fit Custom Design' policy for volume users. More info: <a href="mailto:sales@brainboxes.com">sales@brainboxes.com</a>



#### PW-600

Power supply with connectors for UK, USA, EU and AUS mains socket. 'Tails' are suitable for connecting to screw terminal blocks.



#### PW-650

Power supply with USB connector and prewired screw terminal block. Suitable for use with 5V USB ports.



#### SW Range

Switch products available in a range of formats and specifications.

[www.brainboxes.com](http://www.brainboxes.com)