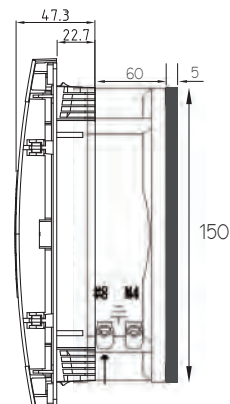
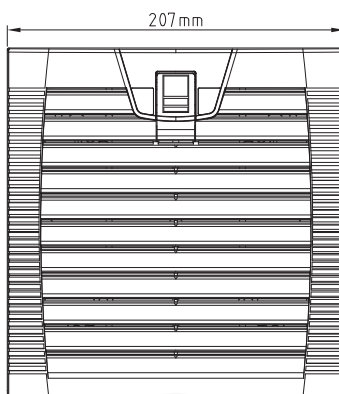
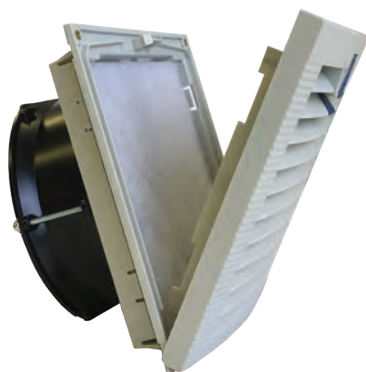


OA172LFGH XC Series

with Hinged Guard

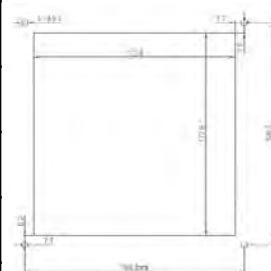


Louvered Filter Fan Kit
with Fan Installed



Frame	Diecast Aluminum	<p>Operating Temperature Ball Bearing -40C ~ +70C</p> <p>Life Expectancy >60,000 hours (L10, 40C)</p> <p>Environmental: Class B Insulation Rated IP54 Guard Guard Frame: ABS Resin UL94V-0 with UV protection Color: Gray (standard) or Black (special order) Filter Mesh: Nylon fiber Synthetic Resin</p>	
Impeller	PBT, UL94V-O plastic		
Connection	2x Lead Wires or Terminals		
Motor	Capacitor drive, impedance protected		
Bearing System	Dual Ball		
Insulation Resistance	>100M ohm between leadwire and frame (500VDC)		
Dielectric Strength	1 min at 1500 VAC, 50/60Hz		

Model Number	OA172LFGH111TXC	OA172LFGH221TXC
Nominal Voltage	120 VAC	230 VAC
Voltage Range	100 ~ 125 VAC	200 ~ 240 VAC
Rated Power	50 W	50 W
Rated Speed (RPM)	3300	3300
Airflow (CFM)	300	300
Noise Level (dB)	61	61
Max. Static Pressure	0.78\" H ₂ O	0.78\" H ₂ O



PANEL CUTOUT

* Note: Airflow data is for the fan without the louvered filter attached. Calculations indicate that up to a 40% reduction (~ 180 CFM) in fan airflow is possible with LFGH unit installed.