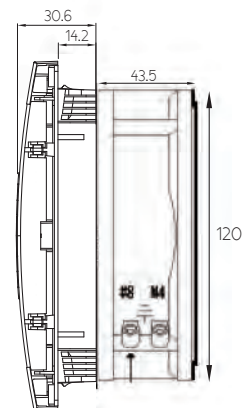
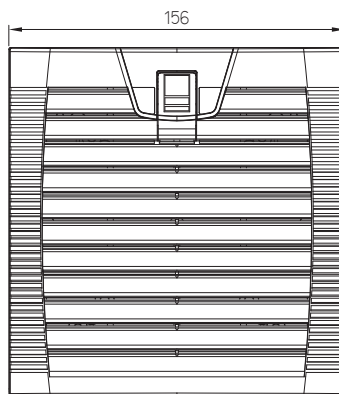
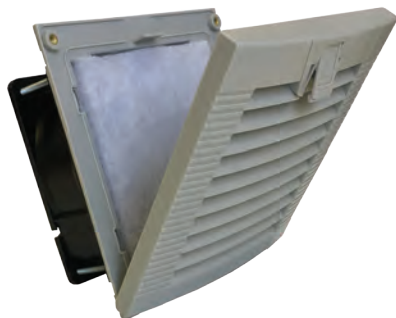


OA109LFGH Series

with Hinged Guard

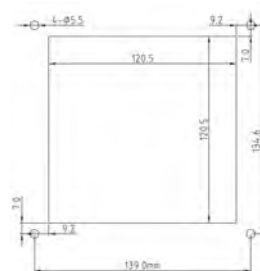


Louvered Filter Fan Kit
with Fan Installed



Frame	Diecast Aluminum	<p>Operating Temperature -20C ~ +70C</p> <p>Life Expectancy >40,000 hours (L10, 40C)</p> <p>Environmental: Class B Insulation Rated IP55 Fan Rated IP54 Guard</p> <p>Guard Frame: ABS Resin UL94V-0 with UV protection Color: Gray (standard) or Black (special order) Filter Mesh: Nylon fiber Synthetic Resin</p>	
Impeller	PBT, UL94V-O plastic		
Connection	Terminals		
Motor	AC shaded pole, impedance protected		
Bearing System	Dual Ball		
Insulation Resistance	>100M ohm between leadwire and frame (500VDC)		
Dielectric Strength	1 min at 1500 VAC, 50/60Hz		

Model Number	OA109LFGH111T	OA109LFGH221T
Nominal Voltage	115 VAC	230 VAC
Nominal Current	0.16 A	0.08 A
Rated Power	12 W (60Hz)	15 W (60Hz)
Rated Speed (RPM)	3100	3100
Airflow (CFM)	106	106
Noise Level (dB)	46	46
Max. Static Pressure	0.32\" H ₂ O	0.32\" H ₂ O



PANEL CUTOUT

* Note: Airflow data is for the fan without the louvered filter attached. Calculations indicate that up to a 40% reduction (~ 67 CFM) in fan airflow is possible with LFGH unit installed.