

TECHNICAL DATA

REV	DESCRIPTION OF REVISION	ECN No.	BY	DATE	APPROVED
Rv01	N/A	N/A	J.Wang	2013/05/19	Karl Pam

Electrical data

Impedance 50Ω
Frequency range 0~6GHz
Working Voltage 250V max
Withstand Voltage 1000V rms
VSWR
Straight ≤1.2
Rigth Angle ≤1.3
Contact resistance
-center contact ≤5mΩ
-outer contact ≤1mΩ
Insulation resistance ≥5000MΩ

Mechanical data

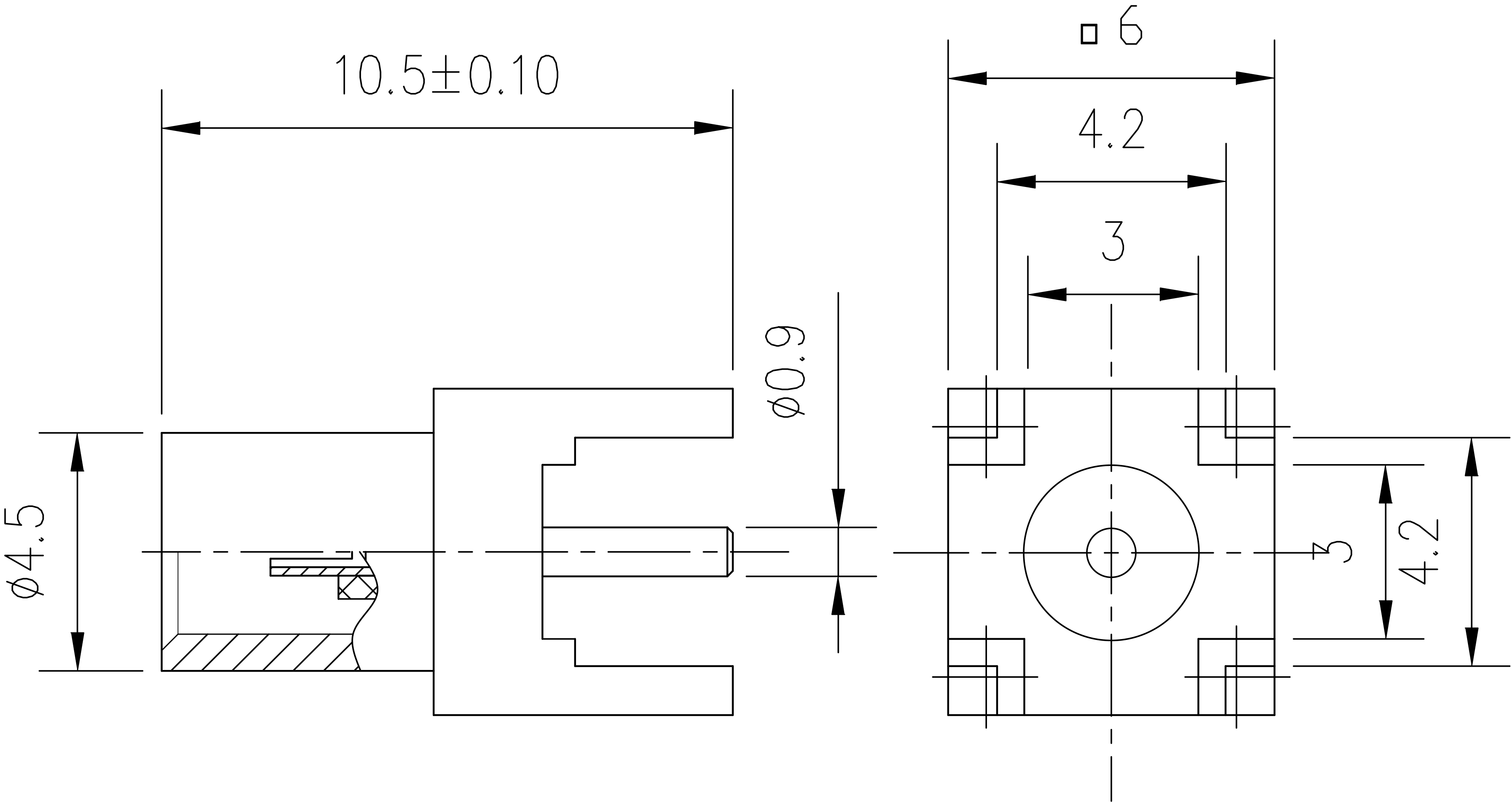
Temperature range -55℃~+155℃
Durability(matings) >500

Material data

Piece Part	Base Material	Plating
Body	Brass	Gold plated
Center conductor	Phosphor Bronze	Gold plated
Coupling nut	Brass	Nickel plated
Gasket	Silicone Rubber	
Insulator	PTFE	

Interface Standards

MIL-C-39012/CECC 22210/IEC 60169-16



NOTES:

- 1.ALL SPECIFICATIONS ARE SUBJECT TO CHANGE WITHOUT NOTICE AT ANY TIME
- 2.CUSTOMER OUTLINE DRAWING FOR REFERENCE ONLY

Part Name: MCX female connector for PCB					
	DIMENSIONS IN MILLIMETERS(mm)				
WT20D3.640.1150	SIZE: A4	SCALE: 4:1	SHEET: 1/1	REV: A	