

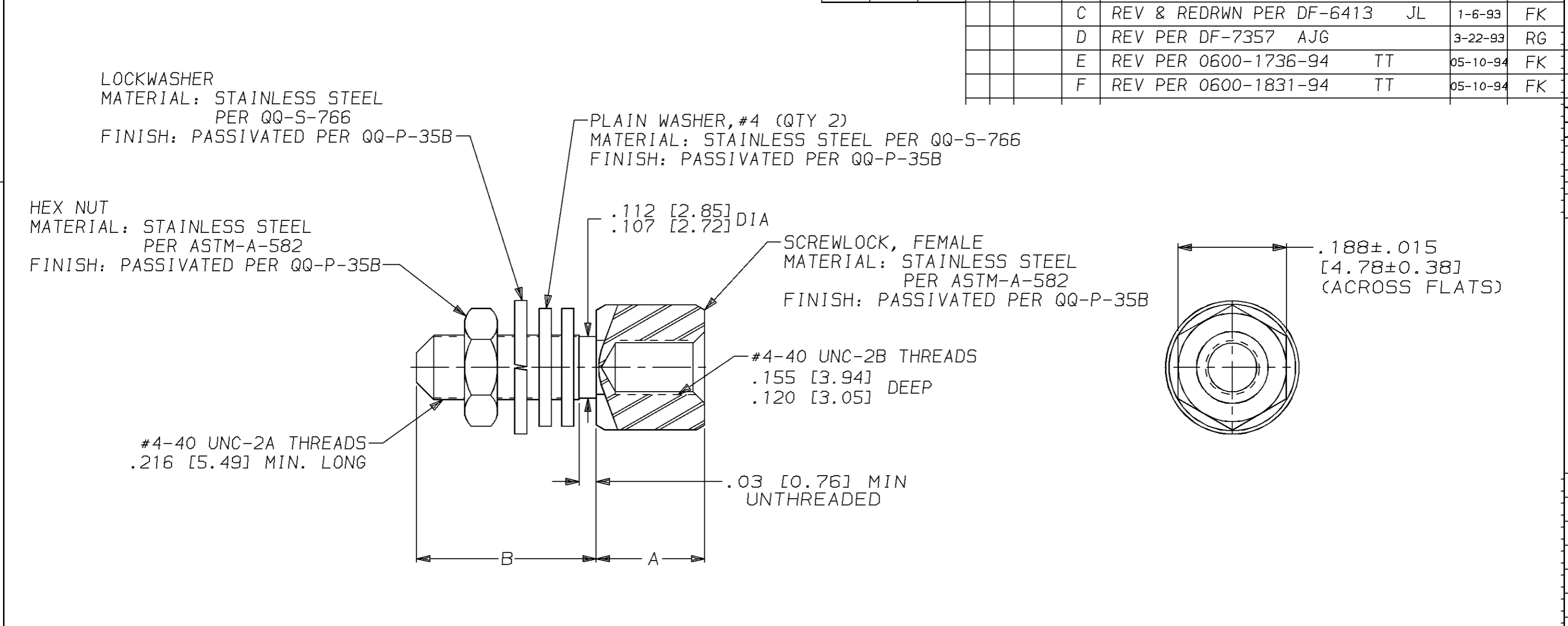
Distributed by:

JAMECO[®]
ELECTRONICS

www.Jameco.com ♦ 1-800-831-4242

The content and copyrights of the attached
material are the property of its owner.

Jameco Part Number 1930656



1. PACKAGED UNASSEMBLED.			
2. EACH KIT HAS TWO COMPLETE ASSEMBLIES AS SHOWN ABOVE.			
3. WHEN A CLINCH TAB TYPE CONNECTOR IS FRONT MOUNTED, ONE FLAT WASHER SHALL BE USED AS A SPACER BETWEEN THE MOUNTING SURFACE AND THE CONNECTOR.			
THIS DRAWING IS A CONTROLLED DOCUMENT FOR AMP INCORPORATED. IT IS SUBJECT TO CHANGE AND THE CONTROLLING ENGINEERING ORGANIZATION SHOULD BE CONTACTED FOR THE LATEST REVISION.			
.560 [14.22]		.223 [5.66]	
.312 [7.92]		.188 [4.78]	
B ±.015 [0.38]		A ±.015 [0.38]	
DO NOT SCALE PRINT. UNLESS SPECIFIED DIMENSIONS IN INCHES [mm] TOLERANCES ON: 2 PLC DEC ± - 3 PLC DEC ± - ANGLES ± -		DR 1-6-93 J.LINDERMANN CHK 1-8-93 F.KINSEY APPD 1-8-93 F.KINSEY APPD 1-8-93 F.KINSEY PRODUCT SPEC - APPLICATION SPEC - WEIGHT -	
MATERIAL SEE CALLOUTS		FINISH SEE CALLOUTS	
		M24308/26-1P	
		MILITARY PART NO	
		212447-2	
		212447-1	
		PART NO	
		AMP AMP Incorporated Harrisburg, PA 17105-3608	
		KIT, SCREWLOCK ASSEMBLY, FEMALE	
		STAINLESS STEEL, AMPLITE	
		NAME	
		SIZE B	
		CAGE CODE 00779	
		DRAWING NO C-212447	
		SCALE 6:1	
		SHEET 1 OF 1	