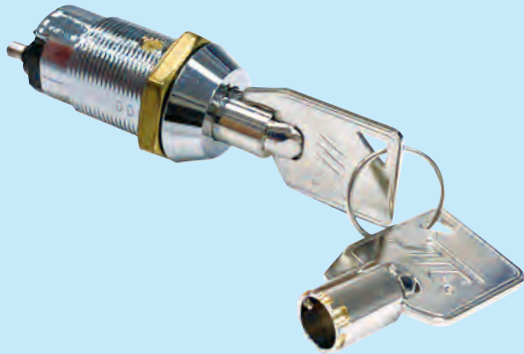
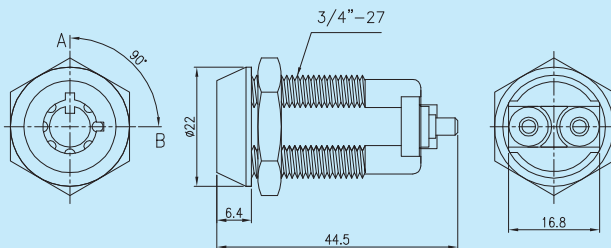
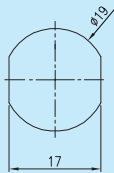


S202Z S202ZA



Unit: mm

Recommended hole size



○ -OFF POSITION

■ -INDICATES KEY-PULL

● -INDICATES NO KEY-PULL



Fig.1



Fig.2

DESCRIPTION

- . Zinc alloy die cast housing and cylinder.
- . Bright chrome plated standard.
- . 7 pin tumbler mechanism.
- . Steel made tubular keys, nickel plated.
- . Key may be withdrawn in one or both positions.
- . Silver plated contacts and terminals.
- . S202Z 2 position (off-on) 2 tubular terminals.
- . S202ZA 2 position (off-on) 2 tubular terminals, spring loaded for momentary contact.
- . Hex nut mounted.
- . All keyed alike or one combination per 100 pcs standard.
- . 10,000 combinations available.

SPECIFICATION

- . Contact Rating: 4A 125VAC, 2A 250VAC.
- . Contact resistance: 50Milli - Ohms Max.
- . Insulation Resistance: 10^9 Ohm Min.
- . Dielectric Strength: 1000VAC - 1 Minute.

| FigNo | LockNumber | Pole | Positions | Terminal | KeyPulls | Turn | ⬆ | ⬇ | Type |
|-------|------------|------|-----------|----------|----------|------|-----|------|------|
| 1 | S202Z-1 | 1 | 2 | 2 | 1 | 90° | Off | On | SPST |
| 2 | S202Z-2 | 1 | 2 | 2 | 2 | 90° | Off | On | SPST |
| 1 | S202ZA | 1 | 2 | 2 | 1 | 90° | Off | (On) | SPST |

():Momentary Contact