

TECHNICAL DATA

REV	DESCRIPTION OF REVISION	ECN No.	BY	DATE	APPROVED
Rv01	N/A	N/A	J.Wang	2013/05/19	Karl Pam

Electrical data

Impedance 50Ω
Frequency range 0~6GHz
Withstand Voltage 500V rms
VSWR
Straight ≤1.15
Rigth Angle ≤1.25
Contact resistance
-center contact ≤5mΩ
-outer contact ≤2.5mΩ
Insulation resistance ≥1000MΩ

Mechanical data

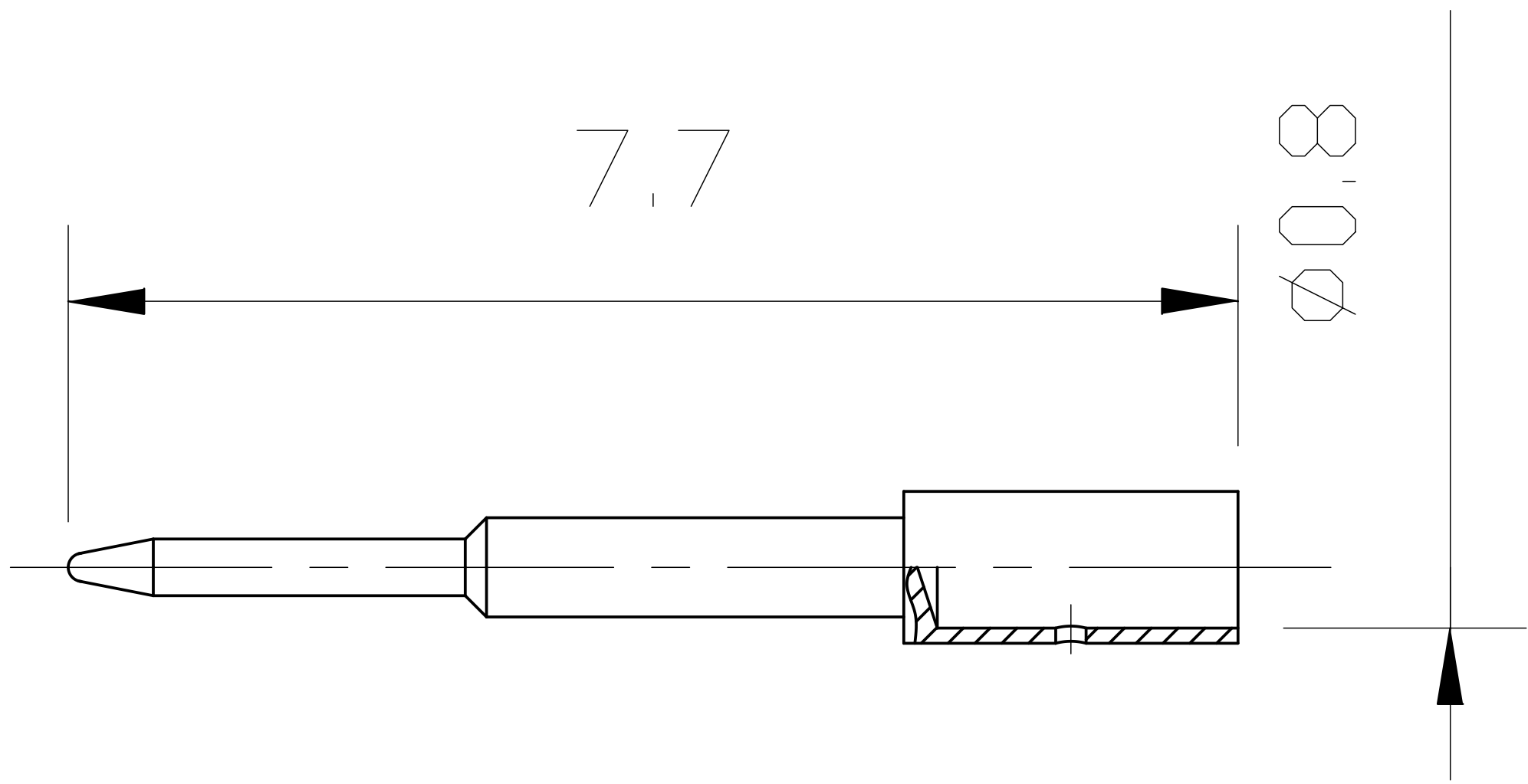
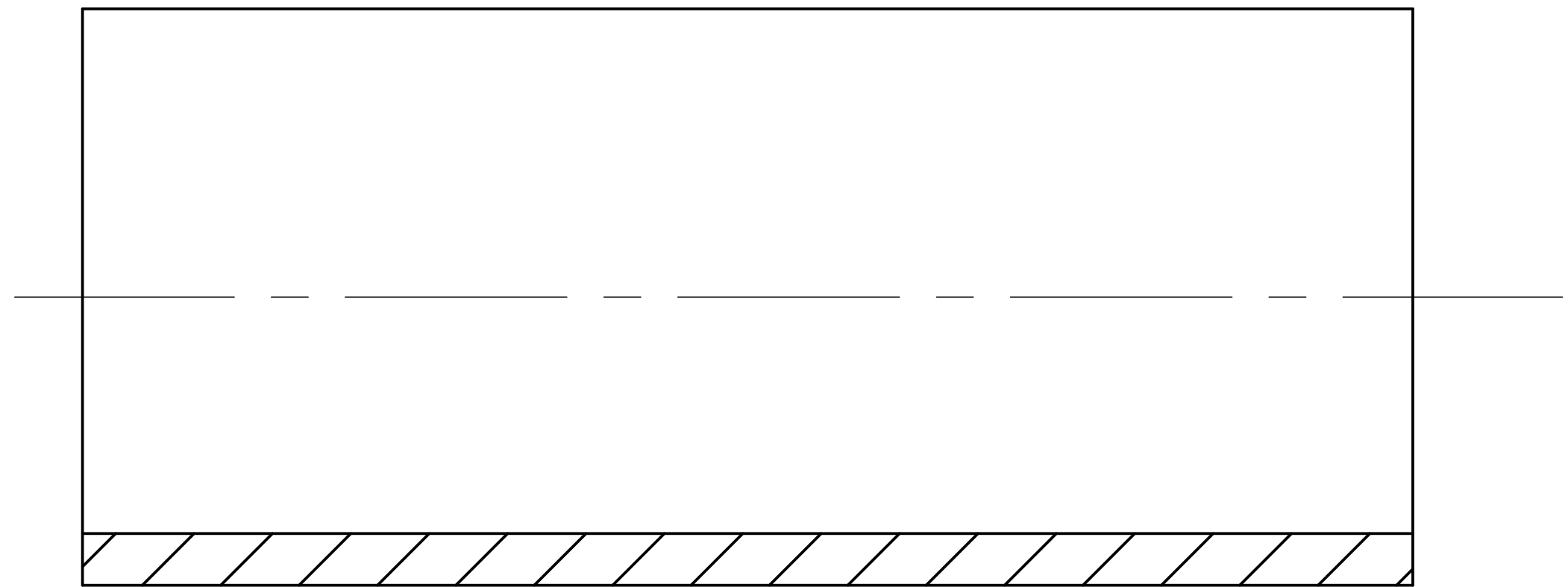
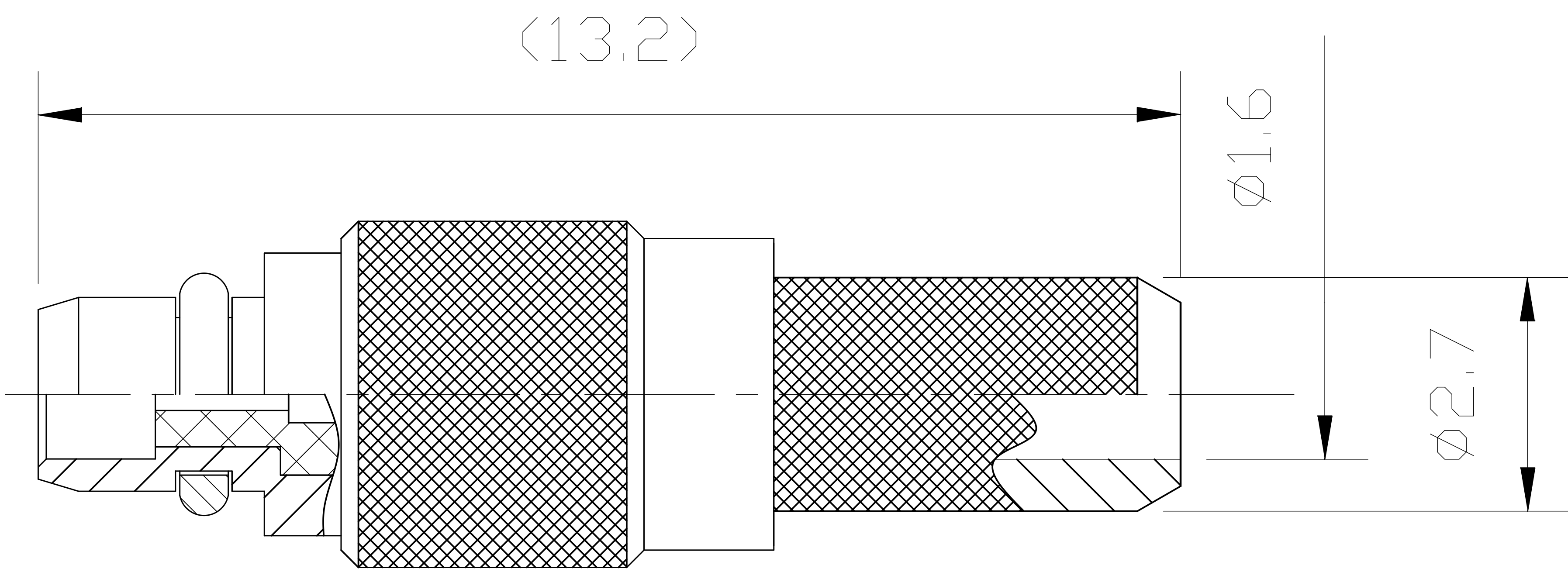
Temperature range -65℃~+165℃
Durability(matings) ≥500 cycles

Material data

Piece Part	Base Material	Plating
Body	Brass	Gold Plated
Center conductor	Brass	Gold plated
Crimping suite	Copper alloy	Nickel or gold plated
O-ring sealing	6146 silastic	
Insulator	PTFE	

Interface Standards

IEC 61169-36 /CECC22340



NOTES:
1.ALL SPECIFICATIONS ARE SUBJECT TO CHANGE WITHOUT NOTICE AT ANY TIME
2.CUSTOMER OUTLINE DRAWING FOR REFERENCE ONLY

Part Name: MMCX male straight connector for RG178 RG316	DIMENSIONS IN MILLIMETERS(mm)				
	SIZE: A4	SCALE: 4:1	SHEET: 1/1	REV: A	
WT16D3.640.227					