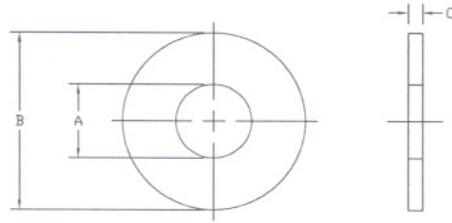


## Flat Washers, Low Carbon, SAE, Zinc Plated

The information below lists the required dimensional, chemical and physical characteristics of the products in this purchase order. If the order received does not meet these requirements, it may result in a supplier corrective action request, which could jeopardize your status as an approved vendor. Unless otherwise specified, all referenced consensus standards must be adhered to in their entirety.



SAE Flat Washers									
Nominal Washer Size	A			B			C		
	Inside Diameter			Outside Diameter			Thickness		
	Basic	Tolerance		Basic	Tolerance		Basic	Max	Min
		Plus	Minus		Plus	Minus			
2	.094	.000	.005	.250	.000	.005	.020	.025	.016
3	.109	.008	.005	.250	.008	.005	.032	.040	.025
4	.125	.008	.005	.312	.008	.005	.032	.040	.025
5	.145	.008	.005	.286	.008	.005	.032	.040	.025
6	.156	.008	.005	.375	.015	.005	.049	.065	.036
8	.188	.008	.005	.438	.015	.005	.049	.065	.036
10	.219	.008	.005	.500	.015	.005	.049	.065	.036
12	.250	.015	.005	.562	.015	.005	.065	.080	.051
1/4	.281	.015	.005	.625	.015	.005	.065	.080	.051
5/16	.344	.015	.005	.688	.015	.007	.065	.080	.051
3/8	.406	.015	.005	.812	.015	.007	.065	.080	.051
7/16	.469	.015	.005	.922	.015	.007	.065	.080	.051
1/2	.531	.015	.005	1.062	.030	.007	.095	.121	.074
9/16	.594	.015	.005	1.156	.030	.007	.095	.121	.074
5/8	.656	.030	.007	1.312	.030	.007	.095	.121	.074
3/4	.812	.030	.007	1.469	.030	.007	.134	.160	.108
7/8	.938	.030	.007	1.750	.030	.007	.134	.160	.108
1	1.062	.030	.007	2.000	.030	.007	.134	.160	.108
1 1/8	1.250	.030	.007	2.250	.030	.007	.134	.160	.108
1 1/4	1.375	.030	.007	2.500	.030	.007	.165	.192	.136
1 3/8	1.500	.030	.007	2.750	.030	.007	.165	.192	.136
1 1/2	1.625	.030	.007	3.000	.030	.007	.165	.192	.136

### Specification Requirements:

- Dimensions: ASME B18.21.1, Type A Plain Washers.  
Except #3 and #5 see dimensions above.
- Material: Carbon steel.
- Coating: ASTM B633, SC1, Type III.
- Corrosion Performance: No White Rust, for a minimum 12 hours when tested within 48 hours of plating [ASTM B117 Test Method]