

# MACHINE PIN SOCKET

## EMS SERIES

### ■ FEATURES

- Funnel shaped four-fingered and six-fingered contacts provide easy IC insertion and withdrawal, high reliability
- Gold plated contact to ensure low contact resistance and Tin plated terminal to prevent contamination during soldering
- All plastic are UL 94V-0 grade fire retardant
- Fit standard pitch with 2.54mm x 2.54mm (0.1" x 0.1") pin spacing

### ■ SPECIFICATIONS

#### 1.MATERIAL

- Sleeve: Brass Gold or Tin over Nickel plated
- Clip: Beryllium Copper Gold over Nickel plated

Jameco PN : 175920  
Jameco ValuePro Mfg. PN:  
2011-1x36-R  
OEM PN: EMS1036400Z

#### 2.ELECTRICAL

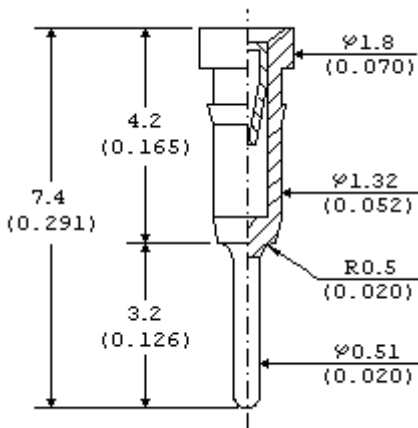
- Contact Rating: 1 ADC Max.
- Contact Resistance: 10mΩ Max.
- Insulation Resistance: 10<sup>6</sup>MΩ Min. at 100 VDC
- Dielectric Strength: 1000 VAC Min. for 1 minute
- Capacitance between adjacent pin 0.9pF Max.

#### 3.MECHANICAL AND ENVIRONMENTAL

- Temperature Rating: Operating -55°C to +125°C
- Average insertion force with steel pin of Ø0.43mm/0.017" <250g
- Average withdrawal force with steel pin of Ø0.43mm/0.017" >25g
- Life cycle with insertion and withdrawal: 100 operating cycles Min.
- Humidity: 90~95% RH, 40°C for 96 Hrs.
- Vibration: per MIL-STD-202F METHOD 204D
- Solderability: per MIL-STD-202F METHOD 208D
- Soldering Heat: 260±5°C for 5±1 seconds

## ■ KINDS OF PIN: UNIT: mm(inch)

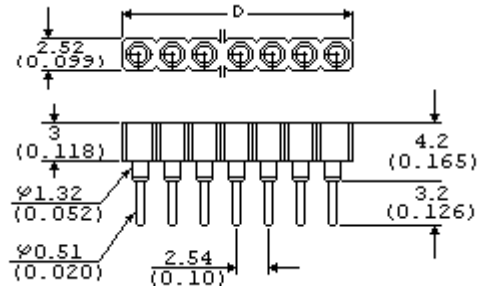
### STANDARD PIN



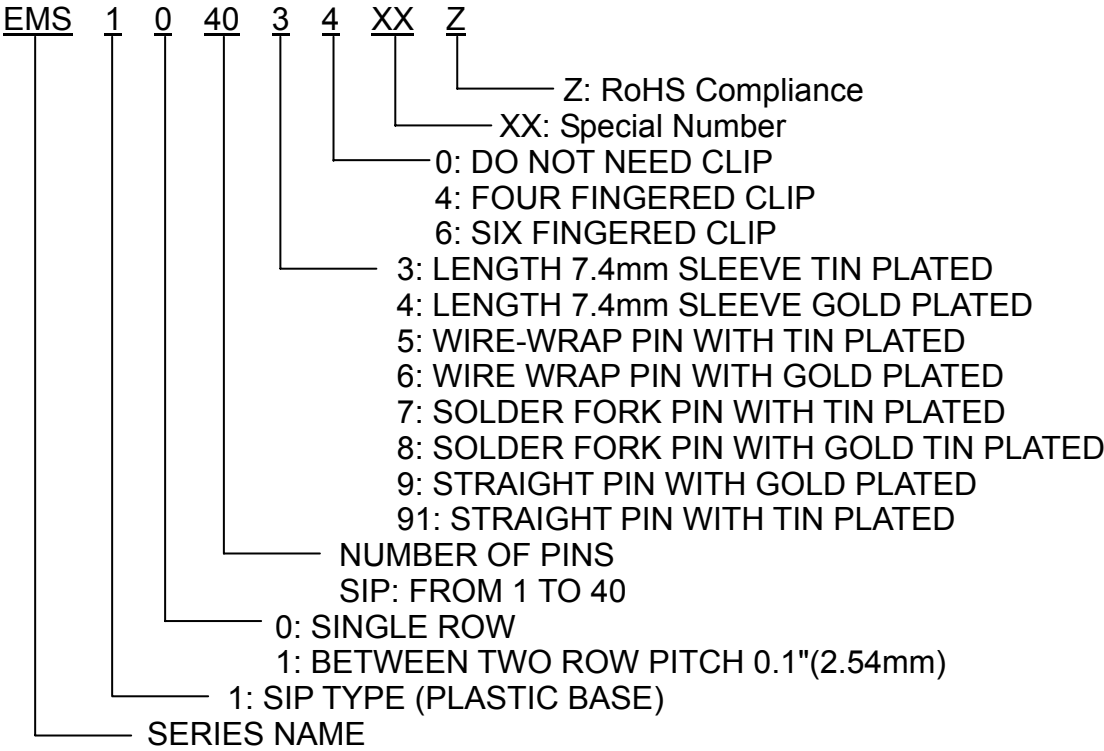
# SIP TYPE

## ■ DIMENSIONS AND CIRCUITRY: UNIT: mm(inch)

### ● STANDARD PIN



# ■ PART NUMBERING SYSTEM



PART NO.	PIN NO.	D
EMS1006**	6	19.3
EMS1008**	8	20.3
EMS1010**	10	25.4
EMS1014**	14	35.5
EMS1016**	16	40.6
EMS1018**	18	45.7
EMS1020**	20	50.8
EMS1022**	22	55.9
EMS1024**	24	61.0
EMS1028**	28	71.1
EMS1030**	30	76.2
EMS1032**	32	81.3
EMS1036**	36	91.4
EMS1040**	40	101.6