

## INTRODUCTION:

Adam Tech ICM Series Machine Pin Sockets and Terminal Strips offer a full range of exceptional quality, high reliability DIP and SIP package Sockets and Terminal Strips. Our sockets feature solid, precision turned sleeves with a closed bottom design to eliminate flux intrusion and solder wicking during soldering. Adam Tech's stamped spring copper insert provides an excellent connection and allows repeated insertion and withdrawals. Plating options include choice of gold, tin or selective gold plating. Our insulators are molded of UL94V-0 thermoplastic and both Sockets and Terminal Strips are XY stackable.

## FEATURES:

High Pressure Contacts  
Precision Stamped Internal Spring Contact  
Anti-Solder Wicking design  
Machine Insertable  
Single or Dual Row  
Low Profile

## MATING COMPONENTS:

Any industry standard components with SIP or DIP leads

## SPECIFICATIONS:

### Material:

Standard insulator: PBT, Glass reinforced, rated UL94V-0

Optional Hi-Temp insulator: Nylon 6T, rated UL94V-0

Insulator Color: Black

Contacts: Phosphor Bronze

### Contact Plating:

Gold over Nickel underplate and Tin over copper underplate

### Electrical:

Operating voltage: 250V AC max.

Current rating: 1 Amp max.

Contact resistance: 30 mΩ max. initial

Insulation resistance: 1000 MΩ min.

Dielectric withstanding voltage: 500V AC for 1 minute

### Mechanical:

Insertion force: 400 grams initial max with .025 dia. leads

Withdrawal force: 90 grams initial min with .025 dia. leads

### Temperature Rating:

Operating temperature: -55°C to +85°C

Soldering process temperature:

Standard insulator: 235°C

Hi-Temp insulator: 260°C

## PACKAGING:

Anti-ESD plastic tubes

## APPROVALS AND CERTIFICATIONS:

UL Recognized & CSA Certified, File no. E224053

**HI-TEMP**  
INSULATOR  
AVAILABLE



## OPTIONS: (MCT series on pg. 189-190)

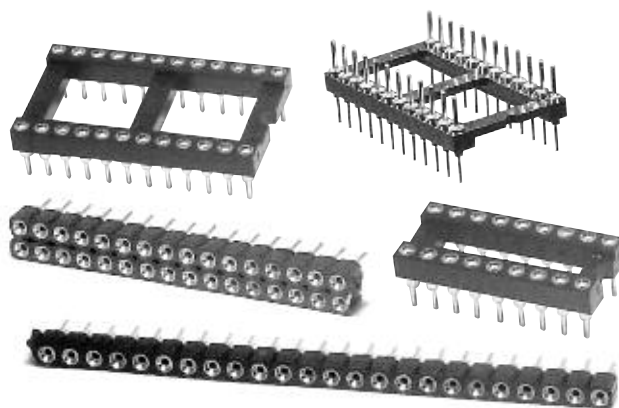
Add designator(s) to end of part number

**SMT** = Surface mount leads Dual Row

**SMT-A** = Surface mount leads Type A

**SMT-B** = Surface mount leads Type B

**HT** = Hi-Temp insulator for Hi-Temp soldering processes up to 260°C



## ORDERING INFORMATION OPEN FRAME SCREW MACHINE SOCKETS & TERMINALS

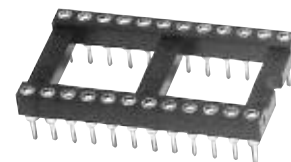
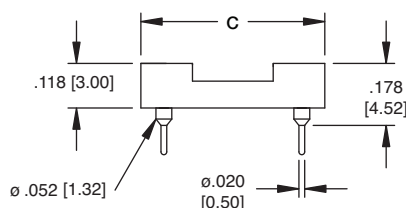
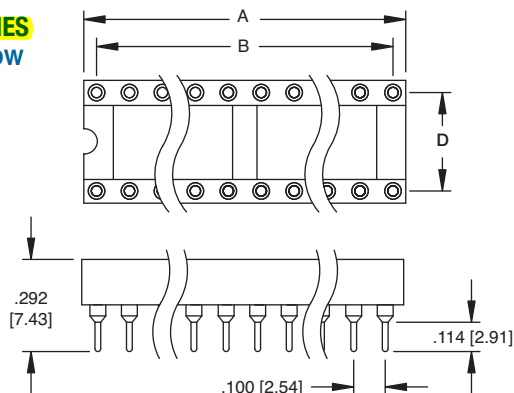
ICM	6	28	1	GT
<b>SERIES INDICATOR</b> <b>ICM</b> = Screw Machine IC Socket <b>TMC</b> = Screw Machine DIP Terminals	<b>POSITIONS</b> 06 Thru 52			<b>PLATING</b> <b>GT</b> = Gold plated inner contact Tin plated outer sleeve <b>TT</b> = Tin plated inner contact Tin plated outer sleeve
<b>ROW SPACING</b> <b>3</b> = .300" Row Spacing Positions: 06, 08, 10, 14, 16, 18, 20, 24, 28 <b>4</b> = .400" Row Spacing Positions: 20, 22, 24, 28, 32 <b>6</b> = .600" Row Spacing Positions: 24, 28, 32, 36, 40, 42, 48, 50, 52 <b>9</b> = .900" Row Spacing Positions: 50 & 52			<b>TAIL LENGTH</b> <b>1</b> = Standard DIP Length <b>2</b> = Wire wrap tails	

SEE PGS.  
190-191

## ORDERING INFORMATION SCREW MACHINE SOCKETS

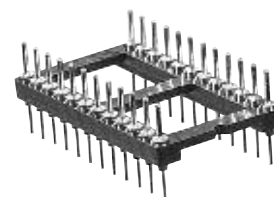
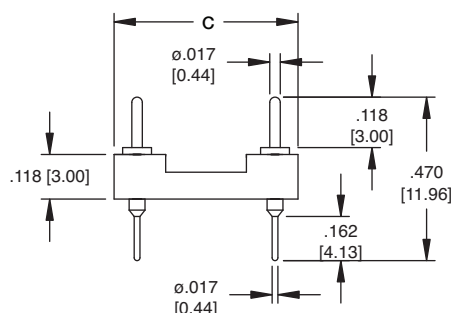
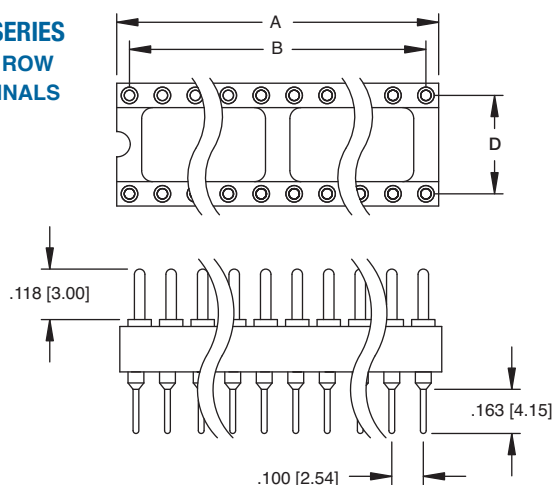
SMC	1	04	1	GT
<b>SERIES INDICATOR</b> <b>1SMC</b> = .039 (1.00mm) Screw machine contact socket <b>HSMC</b> = .050 (1.27mm) Screw machine contact socket <b>2SMC</b> = .078 (2.00mm) Screw machine contact socket <b>SMC</b> = .100 (2.54mm) Screw machine contact socket	<b>POSITIONS</b> Single Row: 01 thru 40 Dual Row: 02 thru 80		<b>TAIL LENGTH</b> <b>1</b> = Standard Length	<b>PLATING</b> <b>GT</b> = Gold plated inner contact Tin plated outer sleeve <b>TT</b> = Tin plated inner contact Tin plated outer sleeve
	<b>BODY STYLE</b> <b>1</b> = Single Row Straight <b>1R</b> = Single Row Right Angle <b>2</b> = Dual Row Straight <b>2R</b> = Dual Row Right Angle			

## ICM SERIES DUAL ROW SOCKET



ICM-624-1-GT

## TMC SERIES DUAL ROW TERMINALS



TMC-624-1-GT

Drawings Pg.190-191 Options Pg.188

## ORDERING INFORMATION SCREW MACHINE TERMINAL STRIPS



### SERIES INDICATOR

**1MCT**= .039 (1.00mm)  
Screw machine  
contact  
terminal strip

**HMCT**= .050 (1.27mm)  
Screw machine  
contact  
terminal strip

**2MCT**= .078 (2.00mm)  
Screw machine  
contact  
terminal strip

**MCT**= .100 (2.54mm)  
Screw machine  
contact  
terminal strip

### POSITIONS

Single Row:

01 thru 40

Dual Row:

02 thru 80

### PLATING

**G** = Gold Flash overall

**T** = 100u" Tin overall

### TAIL LENGTH

**1** = Standard Length

**2** = Special Length,  
customer specified  
as tail length/  
total length

### BODY STYLE

**1** = Single Row Straight

**1R** = Single Row Right Angle

**2** = Dual Row Straight

**2R** = Dual Row Right Angle

POSITION	A	B	C	D
				ROW SPACING
6	.300 [7.62]	.200 [5.08]		
8	.400 [10.16]	.300 [7.62]		
10	.500 [12.70]	.400 [10.16]		
14	.700 [17.78]	.600 [15.24]		
16	.800 [20.32]	.700 [17.78]	.400 [10.16]	.300 [7.62]
18	.900 [22.86]	.800 [20.32]		
20	1.00 [25.40]	.900 [22.86]		
24	1.20 [30.48]	1.10 [27.94]		
28	1.40 [35.56]	1.30 [33.02]		
20	1.00 [25.40]	.900 [22.86]		
22	1.10 [27.94]	1.00 [25.40]	.500 [12.70]	.400 [10.16]
24	1.20 [30.48]	1.10 [27.94]		
28	1.40 [35.56]	1.30 [33.02]		
32	1.60 [40.64]	1.50 [38.10]		
24	1.20 [30.48]	1.10 [27.94]	.700 [17.78]	.600 [15.24]
28	1.40 [35.56]	1.30 [33.02]		
32	1.60 [40.64]	1.50 [38.10]		
36	1.80 [45.72]	1.70 [43.18]		
40	2.00 [50.80]	1.90 [48.26]		
42	2.10 [53.34]	1.90 [48.26]		
48	2.40 [60.96]	2.30 [58.42]		
50	2.50 [63.50]	2.40 [60.96]		
52	2.60 [66.04]	2.50 [63.50]		
50	2.50 [63.50]	2.40 [60.96]	1.00 [25.40]	.900 [22.86]
52	2.60 [66.04]	2.50 [63.50]		